

CLTB Antibody (monoclonal) (M01)

Mouse monoclonal antibody raised against a full length recombinant CLTB.

Catalog # AT1563a

Product Information

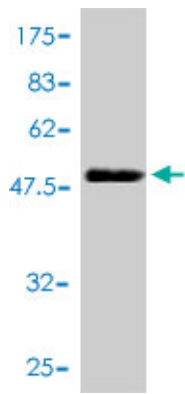
Application	WB, IHC, IF, E
Primary Accession	P09497
Other Accession	BC006457
Reactivity	Human
Host	mouse
Clonality	monoclonal
Isotype	IgG2b kappa
Clone Names	4B12-1E3
Calculated MW	25190

Additional Information

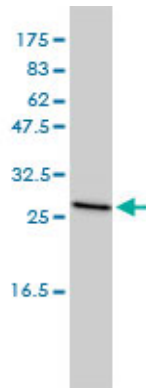
Gene ID	1212
Other Names	Clathrin light chain B, Lcb, CLTB
Target/Specificity	CLTB (AAH06457, 1 a.a. ~ 211 a.a) full-length recombinant protein with GST tag. MW of the GST tag alone is 26 KDa.
Dilution	WB~~1:500~1000 IHC~~1:100~500 IF~~1:50~200 E~~N/A
Format	Clear, colorless solution in phosphate buffered saline, pH 7.2 .
Storage	Store at -20°C or lower. Aliquot to avoid repeated freezing and thawing.
Precautions	CLTB Antibody (monoclonal) (M01) is for research use only and not for use in diagnostic or therapeutic procedures.

Images

Antibody Reactive Against Recombinant Protein.Western
Blot detection against Immunogen (48.95 KDa) .

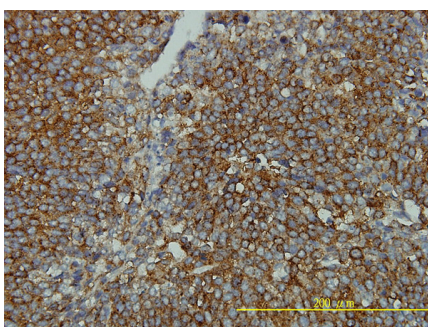
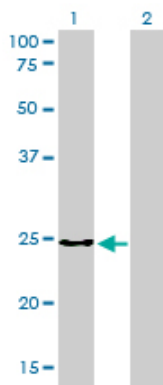


CLTB monoclonal antibody (M01), clone 4B12-1E3
Western Blot analysis of CLTB expression in MCF-7 ((Cat # AT1563a)

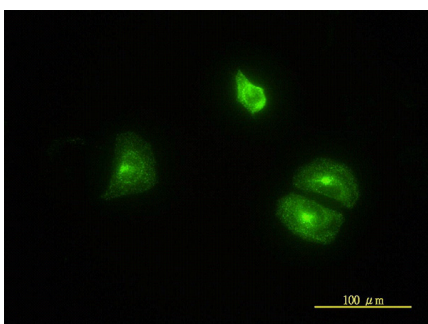


Western Blot analysis of CLTB expression in transfected 293T cell line by CLTB monoclonal antibody (M01), clone 4B12-1E3.

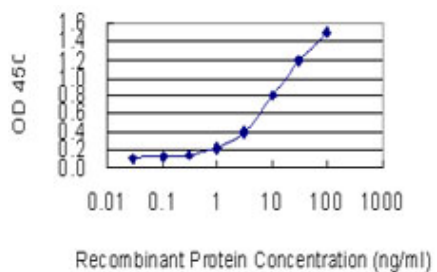
Lane 1: CLTB transfected lysate(23.2 KDa).
Lane 2: Non-transfected lysate.



Immunoperoxidase of monoclonal antibody to CLTB on formalin-fixed paraffin-embedded human transitional cell carcinoma tissue. [antibody concentration 2 ug/ml]



Immunofluorescence of monoclonal antibody to CLTB on HeLa cell. [antibody concentration 10 ug/ml]



Detection limit for recombinant GST tagged CLTB is 0.1 ng/ml as a capture antibody.

Please note: All products are 'FOR RESEARCH USE ONLY. NOT FOR USE IN DIAGNOSTIC OR THERAPEUTIC PROCEDURES'.