

# CLDN2 Antibody (monoclonal) (M01)

Mouse monoclonal antibody raised against a partial recombinant CLDN2.

Catalog # AT1551a

## Product Information

---

<b>Application</b>	WB, E
<b>Primary Accession</b>	<a href="#">P57739</a>
<b>Other Accession</b>	<a href="#">NM_020384</a>
<b>Reactivity</b>	Human
<b>Host</b>	mouse
<b>Clonality</b>	monoclonal
<b>Isotype</b>	IgG2a Kappa
<b>Clone Names</b>	3F1
<b>Calculated MW</b>	24549

## Additional Information

---

<b>Gene ID</b>	9075
<b>Other Names</b>	Claudin-2, SP82, CLDN2
<b>Target/Specificity</b>	CLDN2 (NP_065117, 29 a.a. ~ 80 a.a) partial recombinant protein with GST tag. MW of the GST tag alone is 26 KDa.
<b>Dilution</b>	WB~~1:500~1000 E~~N/A
<b>Format</b>	Clear, colorless solution in phosphate buffered saline, pH 7.2 .
<b>Storage</b>	Store at -20°C or lower. Aliquot to avoid repeated freezing and thawing.
<b>Precautions</b>	CLDN2 Antibody (monoclonal) (M01) is for research use only and not for use in diagnostic or therapeutic procedures.

## Background

---

This gene product belongs to the claudin protein family whose members have been identified as major integral membrane proteins localized exclusively at tight junctions. Claudins are expressed in an organ-specific manner and regulate tissue-specific physiologic properties of tight junctions. This protein is expressed in the intestine. Alternatively spliced transcript variants with different 5' untranslated region have been found for this gene.

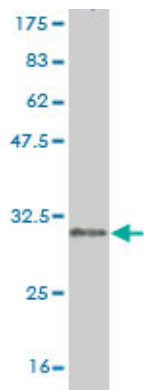
## References

---

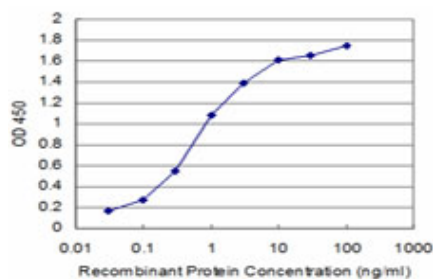
1.A novel microfluidics-based method for probing weak protein-protein interactions.Tan DC, Wijay IP, Ochsner M, Vasina EN, Nallani M, Hunziker W, Kathrin-Sinner E.Lab Chip, 2012 DOI:

10.1039/C2LC40228A2. Proteopolymersomes: In vitro production of a membrane protein in polymersome membranes. Nallani M, Andreasson-Ochsner M, Darren Tan CW, Sinner EK, Wisantoso Y, Geifman-Shochat S, Hunziker W. *Biointerphases* 6, 153 (2011); doi:10.1116/ 1.36443843. Probing Effects of pH change on Dynamic Response of Claudin-2 Mediated Adhesion Using Single Molecule Force Spectroscopy. Lim TS, Vedula SR, Huic S, Kausalya PJ, Hunziker W, Lim CT. *Exp Cell Res*. 2008 Aug 15;314(14):2643-51. Epub 2008 Jun 3.

## Images



Antibody Reactive Against Recombinant Protein. Western Blot detection against Immunogen (31.46 kDa) .



Detection limit for recombinant GST tagged CLDN2 is approximately 0.03ng/ml as a capture antibody.

Please note: All products are 'FOR RESEARCH USE ONLY. NOT FOR USE IN DIAGNOSTIC OR THERAPEUTIC PROCEDURES'.