

## CHFR Antibody (monoclonal) (M08)

Mouse monoclonal antibody raised against a partial recombinant CHFR.  
Catalog # AT1519a

### Product Information

---

<b>Application</b>	WB, E
<b>Primary Accession</b>	<a href="#">Q96EP1</a>
<b>Other Accession</b>	<a href="#">BC012072</a>
<b>Reactivity</b>	Human
<b>Host</b>	mouse
<b>Clonality</b>	monoclonal
<b>Isotype</b>	IgG2a Kappa
<b>Clone Names</b>	2B11
<b>Calculated MW</b>	73386

### Additional Information

---

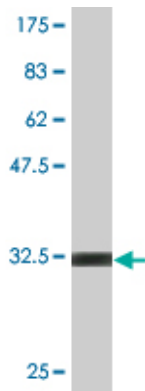
<b>Gene ID</b>	55743
<b>Other Names</b>	E3 ubiquitin-protein ligase CHFR, 632-, Checkpoint with forkhead and RING finger domains protein, RING finger protein 196, CHFR, RNF196
<b>Target/Specificity</b>	CHFR (AAH12072.1, 136 a.a. ~ 194 a.a) partial recombinant protein with GST tag. MW of the GST tag alone is 26 KDa.
<b>Dilution</b>	WB~~1:500~1000 E~~N/A
<b>Format</b>	Clear, colorless solution in phosphate buffered saline, pH 7.2 .
<b>Storage</b>	Store at -20°C or lower. Aliquot to avoid repeated freezing and thawing.
<b>Precautions</b>	CHFR Antibody (monoclonal) (M08) is for research use only and not for use in diagnostic or therapeutic procedures.

### References

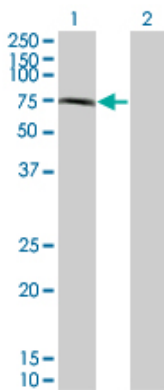
---

CHFR functions as a ubiquitin ligase for HLTF to regulate its stability and functions. Kim JM, et al. *Biochem Biophys Res Commun*, 2010 May 14. PMID 20388495. Aberrant gene methylation in the peritoneal fluid is a risk factor predicting peritoneal recurrence in gastric cancer. Hiraki M, et al. *World J Gastroenterol*, 2010 Jan 21. PMID 20082478. Aberrant promoter hypermethylation of the CHFR gene in oral squamous cell carcinomas. Baba S, et al. *Oncol Rep*, 2009 Nov. PMID 19787237. CHFR promoter hypermethylation and reduced CHFR mRNA expression in ovarian cancer. Gao Y, et al. *Int J Biol Markers*, 2009 Apr-Jun. PMID 19634111. Novel susceptibility loci for second primary tumors/recurrence in head and neck cancer patients: large-scale evaluation of genetic variants. Wu X, et al. *Cancer Prev Res (Phila)*, 2009 Jul. PMID 19584075.

## Images

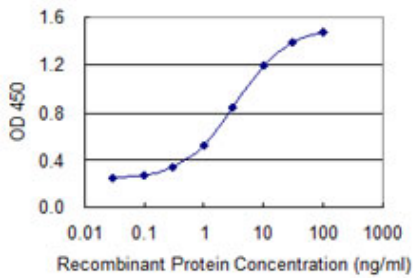


Antibody Reactive Against Recombinant Protein. Western Blot detection against Immunogen (32.12 KDa) .



Western Blot analysis of CHFR expression in transfected 293T cell line by CHFR monoclonal antibody (M08), clone 2B11.

Lane 1: CHFR transfected lysate(72.1 KDa).  
Lane 2: Non-transfected lysate.



Detection limit for recombinant GST tagged CHFR is 0.03 ng/ml as a capture antibody.

Please note: All products are 'FOR RESEARCH USE ONLY. NOT FOR USE IN DIAGNOSTIC OR THERAPEUTIC PROCEDURES'.