

# CENTB2 Antibody (monoclonal) (M01)

Mouse monoclonal antibody raised against a partial recombinant CENTB2.

Catalog # AT1495a

## Product Information

---

<b>Application</b>	WB, IP, E
<b>Primary Accession</b>	<a href="#">Q15057</a>
<b>Other Accession</b>	<a href="#">NM_012287</a>
<b>Reactivity</b>	Human
<b>Host</b>	mouse
<b>Clonality</b>	monoclonal
<b>Isotype</b>	IgG1 Kappa
<b>Clone Names</b>	4G3
<b>Calculated MW</b>	88029

## Additional Information

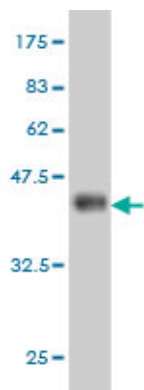
---

<b>Gene ID</b>	23527
<b>Other Names</b>	Arf-GAP with coiled-coil, ANK repeat and PH domain-containing protein 2, Centaurin-beta-2, Cnt-b2, ACAP2, CENTB2, KIAA0041
<b>Target/Specificity</b>	CENTB2 (NP_036419, 473 a.a. ~ 581 a.a) partial recombinant protein with GST tag. MW of the GST tag alone is 26 KDa.
<b>Dilution</b>	WB~~1:500~1000 IP~~N/A E~~N/A
<b>Format</b>	Clear, colorless solution in phosphate buffered saline, pH 7.2 .
<b>Storage</b>	Store at -20°C or lower. Aliquot to avoid repeated freezing and thawing.
<b>Precautions</b>	CENTB2 Antibody (monoclonal) (M01) is for research use only and not for use in diagnostic or therapeutic procedures.

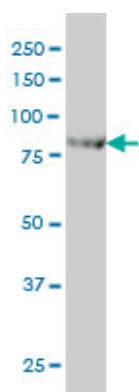
## References

---

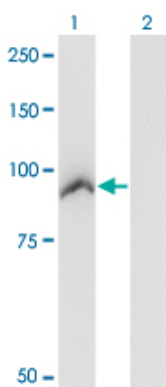
Substrate specificities and activities of AZAP family Arf GAPs in vivo. Cuthbert EJ, et al. *Am J Physiol Cell Physiol*, 2008 Jan. PMID 18003747. Diversification of transcriptional modulation: large-scale identification and characterization of putative alternative promoters of human genes. Kimura K, et al. *Genome Res*, 2006 Jan. PMID 16344560. Immunoaffinity profiling of tyrosine phosphorylation in cancer cells. Rush J, et al. *Nat Biotechnol*, 2005 Jan. PMID 15592455. The status, quality, and expansion of the NIH full-length cDNA project: the Mammalian Gene Collection (MGC). Gerhard DS, et al. *Genome Res*, 2004 Oct. PMID 15489334. Generation and initial analysis of more than 15,000 full-length human and mouse cDNA sequences. Strausberg RL, et al. *Proc Natl Acad Sci U S A*, 2002 Dec 24. PMID 12477932.



Antibody Reactive Against Recombinant Protein. Western Blot detection against Immunogen (37.73 KDa) .



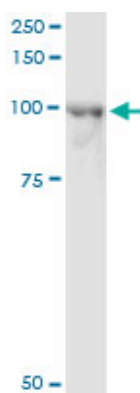
CENTB2 monoclonal antibody (M01), clone 4G3 Western Blot analysis of CENTB2 expression in HeLa ( (Cat # AT1495a )



Western Blot analysis of ACAP2 expression in transfected 293T cell line by ACAP2 monoclonal antibody (M01), clone 4G3.

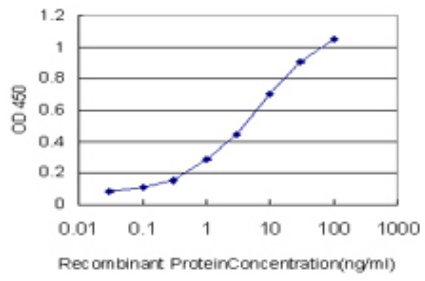
Lane 1: ACAP2 transfected lysate (Predicted MW: 88.1 KDa).

Lane 2: Non-transfected lysate.



Immunoprecipitation of ACAP2 transfected lysate using anti-ACAP2 monoclonal antibody and Protein A Magnetic Bead ([U0007](#)), and immunoblotted with ACAP2 monoclonal antibody.

Detection limit for recombinant GST tagged CENTB2 is approximately 0.1ng/ml as a capture antibody.



Please note: All products are 'FOR RESEARCH USE ONLY. NOT FOR USE IN DIAGNOSTIC OR THERAPEUTIC PROCEDURES'.