

CDR2 Antibody (monoclonal) (M01)

Mouse monoclonal antibody raised against a partial recombinant CDR2.

Catalog # AT1484a

Product Information

Application	WB, IF, E
Primary Accession	Q01850
Other Accession	NM_001802
Reactivity	Human
Host	mouse
Clonality	monoclonal
Isotype	IgG2a Kappa
Clone Names	4F5
Calculated MW	51855

Additional Information

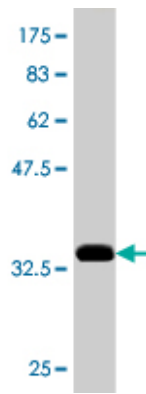
Gene ID	1039
Other Names	Cerebellar degeneration-related protein 2, Major Yo paraneoplastic antigen, Paraneoplastic cerebellar degeneration-associated antigen, CDR2, PCD17
Target/Specificity	CDR2 (NP_001793, 296 a.a. ~ 404 a.a) partial recombinant protein with GST tag. MW of the GST tag alone is 26 KDa.
Dilution	WB~~1:500~1000 IF~~1:50~200 E~~N/A
Format	Clear, colorless solution in phosphate buffered saline, pH 7.2 .
Storage	Store at -20°C or lower. Aliquot to avoid repeated freezing and thawing.
Precautions	CDR2 Antibody (monoclonal) (M01) is for research use only and not for use in diagnostic or therapeutic procedures.

References

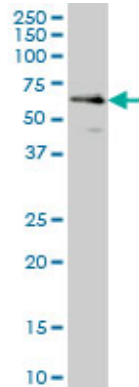
1.The Onconeural Antigen cdr2 Is a Novel APC/C Target that Acts in Mitosis to Regulate C-Myc Target Genes in Mammalian Tumor Cells.O'Donovan KJ, Diedler J, Couture GC, Fak JJ, Darnell RB.PLoS One. 2010 Apr 7;5(4):e10045.

Images

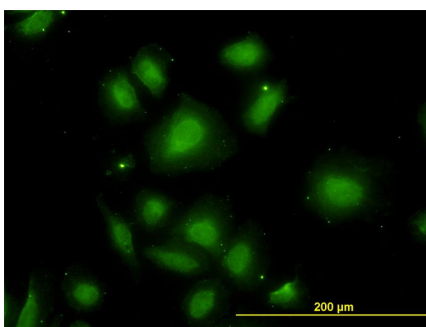
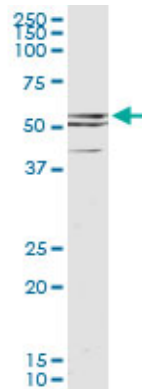
Antibody Reactive Against Recombinant Protein.Western Blot detection against Immunogen (37.73 KDa) .



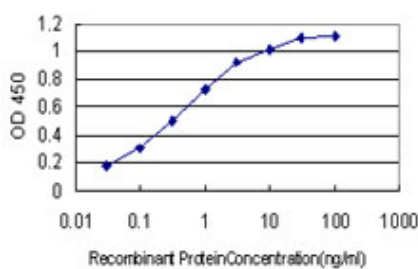
CDR2 monoclonal antibody (M01), clone 4F5 Western Blot analysis of CDR2 expression in HeLa ((Cat # AT1484a)



CDR2 monoclonal antibody (M01), clone 4F5. Western Blot analysis of CDR2 expression in K-562 ((Cat # AT1484a)



Immunofluorescence of monoclonal antibody to CDR2 on HeLa cell. [antibody concentration 10 ug/ml]



Detection limit for recombinant GST tagged CDR2 is approximately 0.03ng/ml as a capture antibody.

Please note: All products are 'FOR RESEARCH USE ONLY. NOT FOR USE IN DIAGNOSTIC OR THERAPEUTIC PROCEDURES'.