

## CD58 Antibody (monoclonal) (M01)

Mouse monoclonal antibody raised against a full length recombinant CD58.

Catalog # AT1442a

### Product Information

---

<b>Application</b>	WB, IHC, IF, E
<b>Primary Accession</b>	<a href="#">P19256</a>
<b>Other Accession</b>	<a href="#">BC005930</a>
<b>Reactivity</b>	Human
<b>Host</b>	mouse
<b>Clonality</b>	monoclonal
<b>Isotype</b>	IgG2a kappa
<b>Clone Names</b>	2D11-B10
<b>Calculated MW</b>	28147

### Additional Information

---

<b>Gene ID</b>	965
<b>Other Names</b>	Lymphocyte function-associated antigen 3, Ag3, Surface glycoprotein LFA-3, CD58, CD58, LFA3
<b>Target/Specificity</b>	CD58 (AAH05930, 1 a.a. ~ 240 a.a) full-length recombinant protein with GST tag. MW of the GST tag alone is 26 KDa.
<b>Dilution</b>	WB~~1:500~1000 IHC~~1:100~500 IF~~1:50~200 E~~N/A
<b>Format</b>	Clear, colorless solution in phosphate buffered saline, pH 7.2 .
<b>Storage</b>	Store at -20°C or lower. Aliquot to avoid repeated freezing and thawing.
<b>Precautions</b>	CD58 Antibody (monoclonal) (M01) is for research use only and not for use in diagnostic or therapeutic procedures.

### Background

---

This gene encodes a member of the immunoglobulin superfamily. The encoded protein is a ligand of the T lymphocyte CD2 protein, and functions in adhesion and activation of T lymphocytes. The protein is localized to the plasma membrane. Alternatively spliced transcript variants have been described.

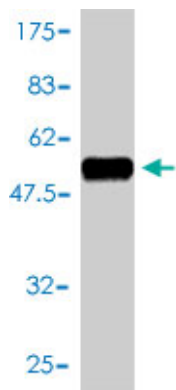
### References

---

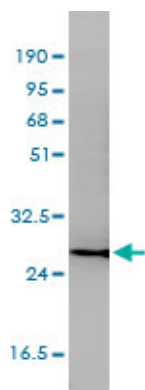
Host genetic factors and vaccine-induced immunity to HBV infection: haplotype analysis. Ryckman KK, et al. PLoS One, 2010 Aug 18. PMID 20806065. Multiple sclerosis susceptibility-associated SNPs do not influence disease severity measures in a cohort of Australian MS patients. Jensen CJ, et al. PLoS One, 2010 Apr 2. PMID

20368992.New genetic associations detected in a host response study to hepatitis B vaccine. Davila S, et al. Genes Immun, 2010 Apr. PMID 20237496.Genetic variants at CD28, PRDM1 and CD2/CD58 are associated with rheumatoid arthritis risk. Raychaudhuri S, et al. Nat Genet, 2009 Dec. PMID 19898481.Integration of genetic risk factors into a clinical algorithm for multiple sclerosis susceptibility: a weighted genetic risk score. De Jager PL, et al. Lancet Neurol, 2009 Dec. PMID 19879194.

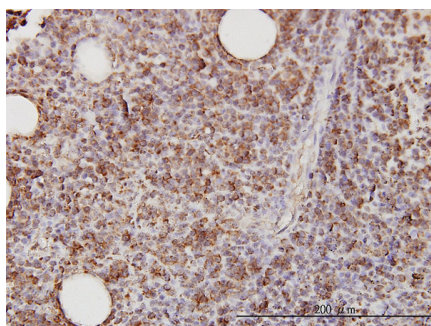
## Images



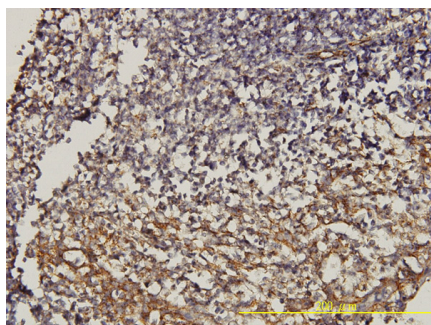
Antibody Reactive Against Recombinant Protein.Western Blot detection against Immunogen (52.14 kDa) .



CD58 monoclonal antibody (M01), clone 2D11-B10  
Western Blot analysis of CD58 expression in Jurkat ( (Cat # AT1442a )

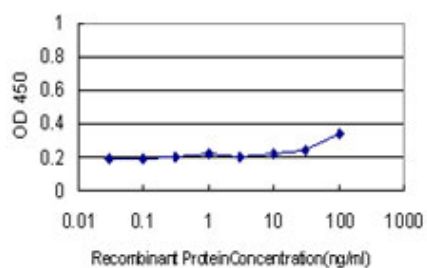
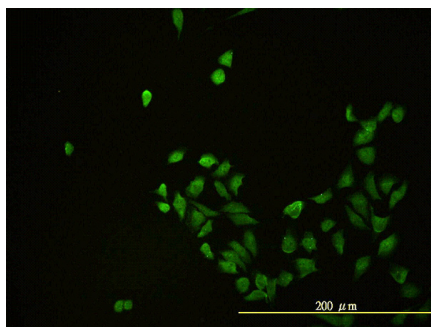


Immunoperoxidase of monoclonal antibody to CD58 on formalin-fixed paraffin-embedded human lymphoma tissue [antibody concentration 3 ug/ml]



Immunoperoxidase of monoclonal antibody to CD58 on formalin-fixed paraffin-embedded human tonsil. [antibody concentration 2 ug/ml]

Immunofluorescence of monoclonal antibody to CD58 on HeLa cell. [antibody concentration 10 ug/ml]



Detection limit for recombinant GST tagged CD58 is approximately 0.3ng/ml as a capture antibody.

Please note: All products are 'FOR RESEARCH USE ONLY. NOT FOR USE IN DIAGNOSTIC OR THERAPEUTIC PROCEDURES'.