

## CCT7 Antibody (monoclonal) (M01)

Mouse monoclonal antibody raised against a partial recombinant CCT7.

Catalog # AT1430a

### Product Information

---

<b>Application</b>	WB, E
<b>Primary Accession</b>	<a href="#">Q99832</a>
<b>Other Accession</b>	<a href="#">BC019296</a>
<b>Reactivity</b>	Human, Mouse, Rat
<b>Host</b>	mouse
<b>Clonality</b>	monoclonal
<b>Isotype</b>	IgG1 kappa
<b>Clone Names</b>	1D6
<b>Calculated MW</b>	59367

### Additional Information

---

<b>Gene ID</b>	10574
<b>Other Names</b>	T-complex protein 1 subunit eta, TCP-1-eta, CCT-eta, HIV-1 Nef-interacting protein, CCT7, CCTH, NIP7-1
<b>Target/Specificity</b>	CCT7 (AAH19296, 425 a.a. ~ 528 a.a) partial recombinant protein with GST tag. MW of the GST tag alone is 26 KDa.
<b>Dilution</b>	WB~~1:500~1000 E~~N/A
<b>Format</b>	Clear, colorless solution in phosphate buffered saline, pH 7.2 .
<b>Storage</b>	Store at -20°C or lower. Aliquot to avoid repeated freezing and thawing.
<b>Precautions</b>	CCT7 Antibody (monoclonal) (M01) is for research use only and not for use in diagnostic or therapeutic procedures.

### Background

---

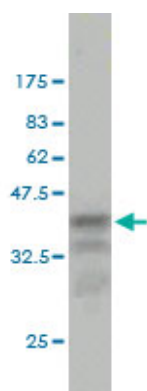
This gene encodes a molecular chaperone that is a member of the chaperonin containing TCP1 complex (CCT), also known as the TCP1 ring complex (TRiC). This complex consists of two identical stacked rings, each containing eight different proteins. Unfolded polypeptides enter the central cavity of the complex and are folded in an ATP-dependent manner. The complex folds various proteins, including actin and tubulin. Alternative splicing results in multiple transcript variants. Related pseudogenes have been identified on chromosomes 5 and 6.

### References

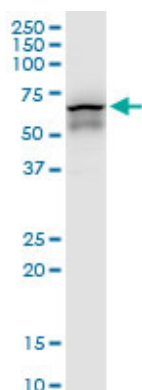
---

Chaperonin genes on the rise: new divergent classes and intense duplication in human and other vertebrate genomes. Mukherjee K, et al. BMC Evol Biol, 2010 Mar 1. PMID 20193073. Defining the human deubiquitinating enzyme interaction landscape. Sowa ME, et al. Cell, 2009 Jul 23. PMID 19615732. A PP2A phosphatase high density interaction network identifies a novel striatin-interacting phosphatase and kinase complex linked to the cerebral cavernous malformation 3 (CCM3) protein. Goudreault M, et al. Mol Cell Proteomics, 2009 Jan. PMID 18782753. The CCT/TRiC chaperonin is required for maturation of sphingosine kinase 1. Zebol JR, et al. Int J Biochem Cell Biol, 2009 Apr. PMID 18775504. PP4R4/KIAA1622 forms a novel stable cytosolic complex with phosphoprotein phosphatase 4. Chen GI, et al. J Biol Chem, 2008 Oct 24. PMID 18715871.

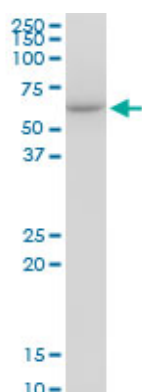
## Images



Antibody Reactive Against Recombinant Protein. Western Blot detection against Immunogen (37.07 KDa) .

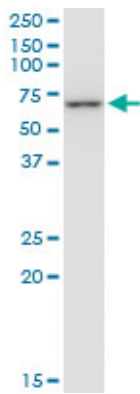


CCT7 monoclonal antibody (M01), clone 1D6. Western Blot analysis of CCT7 expression in human pancreas.

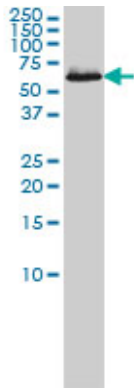


CCT7 monoclonal antibody (M01), clone 1D6. Western Blot analysis of CCT7 expression in PC-12 (Cat # AT1430a )

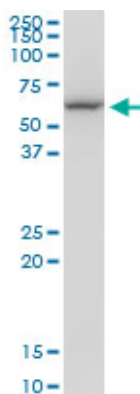
CCT7 monoclonal antibody (M01), clone 1D6. Western Blot analysis of CCT7 expression in 293.



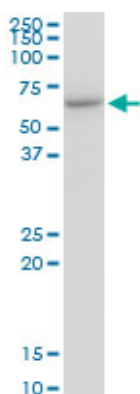
CCT7 monoclonal antibody (M01), clone 1D6 Western Blot analysis of CCT7 expression in HL-60 ( (Cat # AT1430a )



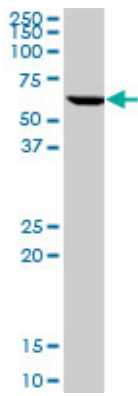
CCT7 monoclonal antibody (M01), clone 1D6. Western Blot analysis of CCT7 expression in Raw 264.7((Cat # AT1430a )



CCT7 monoclonal antibody (M01), clone 1D6. Western Blot analysis of CCT7 expression in NIH/3T3((Cat # AT1430a )

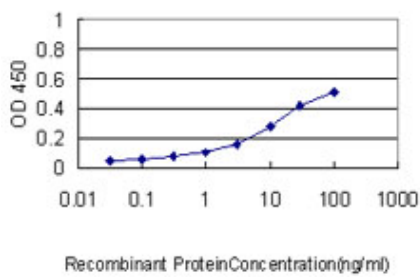
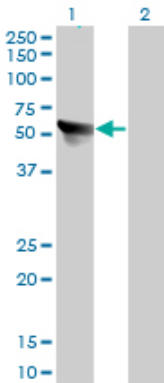


CCT7 monoclonal antibody (M01), clone 1D6. Western Blot analysis of CCT7 expression in K-562 ( (Cat # AT1430a )



Western Blot analysis of CCT7 expression in transfected 293T cell line by CCT7 monoclonal antibody (M01), clone 1D6.

Lane 1: CCT7 transfected lysate(59.4 KDa).  
Lane 2: Non-transfected lysate.



Detection limit for recombinant GST tagged CCT7 is approximately 0.3ng/ml as a capture antibody.

Please note: All products are 'FOR RESEARCH USE ONLY. NOT FOR USE IN DIAGNOSTIC OR THERAPEUTIC PROCEDURES'.