

CASQ2 Antibody (monoclonal) (M01)

Mouse monoclonal antibody raised against a full length recombinant CASQ2.

Catalog # AT1405a

Product Information

Application	WB, E
Primary Accession	O14958
Other Accession	BC022288
Reactivity	Human
Host	mouse
Clonality	monoclonal
Isotype	IgG2b kappa
Clone Names	1B6
Calculated MW	46436

Additional Information

Gene ID	845
Other Names	Calsequestrin-2, Calsequestrin, cardiac muscle isoform, CASQ2
Target/Specificity	CASQ2 (AAH22288, 20 a.a. ~ 399 a.a) full-length recombinant protein with GST tag. MW of the GST tag alone is 26 KDa.
Dilution	WB~~1:500~1000 E~~N/A
Format	Clear, colorless solution in phosphate buffered saline, pH 7.2 .
Storage	Store at -20°C or lower. Aliquot to avoid repeated freezing and thawing.
Precautions	CASQ2 Antibody (monoclonal) (M01) is for research use only and not for use in diagnostic or therapeutic procedures.

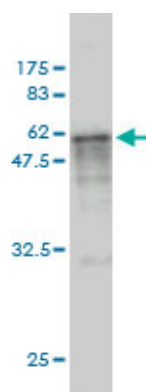
Background

The protein encoded by this gene specifies the cardiac muscle family member of the calsequestrin family. Calsequestrin is localized to the sarcoplasmic reticulum in cardiac and slow skeletal muscle cells. The protein is a calcium binding protein that stores calcium for muscle function. Mutations in this gene cause stress-induced polymorphic ventricular tachycardia, also referred to as catecholaminergic polymorphic ventricular tachycardia 2 (CPVT2), a disease characterized by bidirectional ventricular tachycardia that may lead to cardiac arrest.

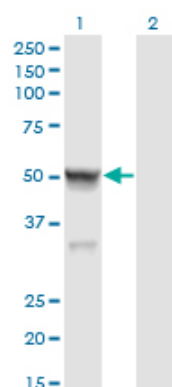
References

1.A novel mouse model of X-linked cardiac hypertrophy. Leatherbury L, Yu Q, Chatterjee B, Walker DL, Yu Z,

Images

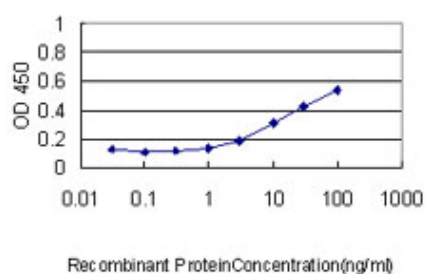


Antibody Reactive Against Recombinant Protein. Western Blot detection against Immunogen (67.54 KDa) .



Western Blot analysis of CASQ2 expression in transfected 293T cell line by CASQ2 monoclonal antibody (M01), clone 1B6.

Lane 1: CASQ2 transfected lysate (46.4 KDa).
Lane 2: Non-transfected lysate.



Detection limit for recombinant GST tagged CASQ2 is approximately 0.3 ng/ml as a capture antibody.

Please note: All products are 'FOR RESEARCH USE ONLY. NOT FOR USE IN DIAGNOSTIC OR THERAPEUTIC PROCEDURES'.