

CAP1 Antibody (monoclonal) (M01)

Mouse monoclonal antibody raised against a full length recombinant CAP1.

Catalog # AT1385a

Product Information

Application	WB, E
Primary Accession	Q01518
Other Accession	BC013963
Reactivity	Human
Host	mouse
Clonality	monoclonal
Isotype	IgG1 Kappa
Clone Names	4A2
Calculated MW	51901

Additional Information

Gene ID	10487
Other Names	Adenylyl cyclase-associated protein 1, CAP 1, CAP1, CAP
Target/Specificity	CAP1 (AAH13963, 1 a.a. ~ 475 a.a) full-length recombinant protein with GST tag. MW of the GST tag alone is 26 KDa.
Dilution	WB~~1:500~1000 E~~N/A
Format	Clear, colorless solution in phosphate buffered saline, pH 7.2 .
Storage	Store at -20°C or lower. Aliquot to avoid repeated freezing and thawing.
Precautions	CAP1 Antibody (monoclonal) (M01) is for research use only and not for use in diagnostic or therapeutic procedures.

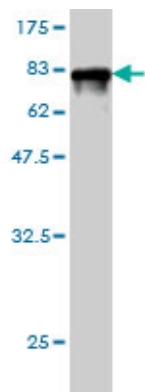
Background

The protein encoded by this gene is related to the *S. cerevisiae* CAP protein, which is involved in the cyclic AMP pathway. The human protein is able to interact with other molecules of the same protein, as well as with CAP2 and actin. Alternatively spliced transcript variants have been identified.

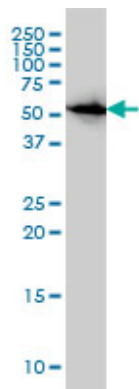
References

- 1.Expression and function of neuronal growth-associated proteins (nGAPs) in PC12 cells.Lu J, Nozumi M, Takeuchi K, Abe H, Igarashi M.Neurosci Res. 2011 Jan 14. [Epub ahead of print]2.Adenylyl cyclase-associated protein-1/CAP1 as a biological target substrate of gelatinase B/MMP-9.Cauwe B, Martens E, Van den Steen PE, Proost P, Van Aelst I, Blockmans D, Opdenakker G.Exp Cell Res. 2008 Sep 10;314(15):2739-49. Epub 2008

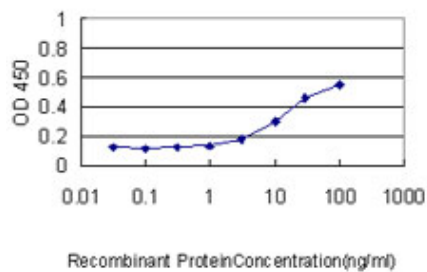
Images



Antibody Reactive Against Recombinant Protein.Western Blot detection against Immunogen (77.99 KDa) .



CAP1 monoclonal antibody (M01), clone 4A2 Western Blot analysis of CAP1 expression in HeLa ((Cat # AT1385a)



Detection limit for recombinant GST tagged CAP1 is approximately 0.3ng/ml as a capture antibody.

Please note: All products are 'FOR RESEARCH USE ONLY. NOT FOR USE IN DIAGNOSTIC OR THERAPEUTIC PROCEDURES'.