

CALCA Antibody (monoclonal) (M01)

Mouse monoclonal antibody raised against a partial recombinant CALCA.

Catalog # AT1371a

Product Information

Application	WB, E
Primary Accession	P06881
Other Accession	NM_001741
Reactivity	Human
Host	mouse
Clonality	monoclonal
Isotype	IgG2a Kappa
Clone Names	4B10
Calculated MW	13899

Additional Information

Gene ID	796
Other Names	Calcitonin gene-related peptide 1, Alpha-type CGRP, Calcitonin gene-related peptide I, CGRP-I, CALCA, CALC1
Target/Specificity	CALCA (NP_001732, 52 a.a. ~ 141 a.a) partial recombinant protein with GST tag. MW of the GST tag alone is 26 KDa.
Dilution	WB~~1:500~1000 E~~N/A
Format	Clear, colorless solution in phosphate buffered saline, pH 7.2 .
Storage	Store at -20°C or lower. Aliquot to avoid repeated freezing and thawing.
Precautions	CALCA Antibody (monoclonal) (M01) is for research use only and not for use in diagnostic or therapeutic procedures.

Background

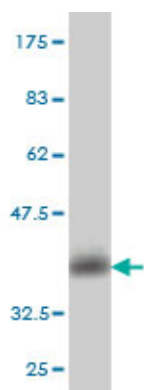
This gene encodes the peptide hormones calcitonin, calcitonin gene-related peptide and katacalcin by tissue-specific alternative RNA splicing of the gene transcripts and cleavage of inactive precursor proteins. Calcitonin is involved in calcium regulation and acts to regulate phosphorus metabolism. Calcitonin gene-related peptide functions as a vasodilator while katacalcin is a calcium-lowering peptide. Multiple transcript variants encoding different isoforms have been found for this gene.

References

High-density polymorphisms analysis of 23 candidate genes for association with bone mineral density.

Giroux S, et al. Bone, 2010 Jul 30. PMID 20654748.Variation at the NFATC2 Locus Increases the Risk of Thiazolinedinedione-Induced Edema in the Diabetes REduction Assessment with ramipril and rosiglitazone Medication (DREAM) Study. Bailey SD, et al. Diabetes Care, 2010 Jul 13. PMID 20628086.Accelerated senescence of endothelial progenitor cells in hypertension is related to the reduction of calcitonin gene-related peptide. Zhou Z, et al. J Hypertens, 2010 May. PMID 20375903.Procalcitonin: a novel cardiac marker with prognostic value in acute coronary syndrome. Atao?lu HE, et al. J Int Med Res, 2010 Jan-Feb. PMID 20233513.Procalcitonin as a prognostic marker in patients with acute myocardial infarction. Kelly D, et al. Biomarkers, 2010 Jun. PMID 20214413.

Images

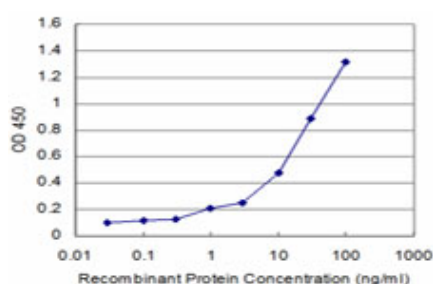


Antibody Reactive Against Recombinant Protein.Western Blot detection against Immunogen (35.64 KDa) .



Western Blot analysis of CALCA expression in transfected 293T cell line by CALCA monoclonal antibody (M01), clone 4B10.

Lane 1: CALCA transfected lysate(15.5 KDa).
Lane 2: Non-transfected lysate.



Detection limit for recombinant GST tagged CALCA is approximately 1 ng/ml as a capture antibody.

Please note: All products are 'FOR RESEARCH USE ONLY. NOT FOR USE IN DIAGNOSTIC OR THERAPEUTIC PROCEDURES'.