

CACNB2 Antibody (monoclonal) (M01)

Mouse monoclonal antibody raised against a partial recombinant CACNB2.

Catalog # AT1367a

Product Information

Application	WB, E
Primary Accession	Q08289
Other Accession	NM_201596
Reactivity	Human, Mouse, Rat
Host	Mouse
Clonality	monoclonal
Isotype	IgG1 Kappa
Clone Names	6C1
Calculated MW	73581

Additional Information

Gene ID	783
Other Names	Voltage-dependent L-type calcium channel subunit beta-2, CAB2, Calcium channel voltage-dependent subunit beta 2, Lambert-Eaton myasthenic syndrome antigen B, MYSB, CACNB2, CACNLB2, MYSB
Target/Specificity	CACNB2 (NP_963890, 213 a.a. ~ 301 a.a) partial recombinant protein with GST tag. MW of the GST tag alone is 26 KDa.
Dilution	WB~~1:500~1000 E~~N/A
Format	Clear, colorless solution in phosphate buffered saline, pH 7.2 .
Storage	Store at -20°C or lower. Aliquot to avoid repeated freezing and thawing.
Precautions	CACNB2 Antibody (monoclonal) (M01) is for research use only and not for use in diagnostic or therapeutic procedures.

Background

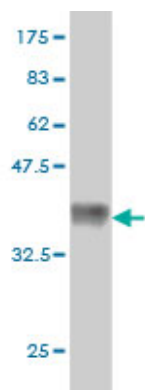
This gene encodes a subunit of a voltage-dependent calcium channel protein which is a member of the voltage-gated calcium channel superfamily. The gene product was originally identified as an antigen target in Lambert-Eaton myasthenic syndrome which is an autoimmune disorder. Mutations in this gene are associated with Brugada syndrome. Alternatively spliced variants have been identified for this gene.

References

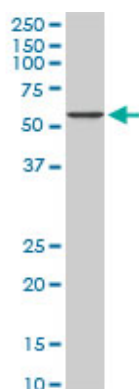
Mutations in the Cardiac L-Type Calcium Channel Associated with Inherited J Wave Syndromes and Sudden

Cardiac Death. Burashnikov E, et al. Heart Rhythm, 2010 Sep 2. PMID 20817017. An approach based on a genome-wide association study reveals candidate loci for narcolepsy. Shimada M, et al. Hum Genet, 2010 Oct. PMID 20677014. Blood pressure and hypertension are associated with 7 loci in the Japanese population. Takeuchi F, et al. Circulation, 2010 Jun 1. PMID 20479155. Recapitulation of two genomewide association studies on blood pressure and essential hypertension in the Korean population. Hong KW, et al. J Hum Genet, 2010 Jun. PMID 20414254. Genome-wide association study of bipolar I disorder in the Han Chinese population. Lee MT, et al. Mol Psychiatry, 2010 Apr 13. PMID 20386566.

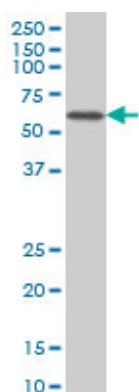
Images



Antibody Reactive Against Recombinant Protein. Western Blot detection against Immunogen (35.53 KDa) .

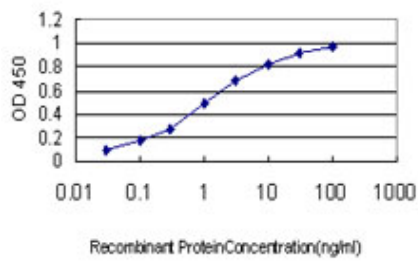
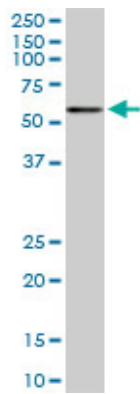


CACNB2 monoclonal antibody (M01), clone 6C1. Western Blot analysis of CACNB2 expression in PC-12 (Cat # AT1367a)



CACNB2 monoclonal antibody (M01), clone 6C1 Western Blot analysis of CACNB2 expression in Jurkat (Cat # AT1367a)

CACNB2 monoclonal antibody (M01), clone 6C1. Western Blot analysis of CACNB2 expression in NIH/3T3 (Cat # AT1367a)



Detection limit for recombinant GST tagged CACNB2 is approximately 0.1 ng/ml as a capture antibody.

Please note: All products are 'FOR RESEARCH USE ONLY. NOT FOR USE IN DIAGNOSTIC OR THERAPEUTIC PROCEDURES'.