

## BFSP1 Antibody (monoclonal) (M01)

Mouse monoclonal antibody raised against a full length recombinant BFSP1.

Catalog # AT1292a

### Product Information

---

Application	WB
Primary Accession	<a href="#">Q12934</a>
Other Accession	<a href="#">BC041483</a>
Reactivity	Human
Host	mouse
Clonality	monoclonal
Isotype	IgG
Clone Names	1B11
Calculated MW	74544

### Additional Information

---

Gene ID	631
Other Names	Filensin, Beaded filament structural protein 1, Lens fiber cell beaded-filament structural protein CP 115, CP115, Lens intermediate filament-like heavy, LIFL-H, BFSP1
Target/Specificity	BFSP1 (AAH41483, 1 a.a. ~ 540 a.a) full-length recombinant protein with GST tag. MW of the GST tag alone is 26 KDa.
Dilution	WB~~1:500~1000
Format	Clear, colorless solution in phosphate buffered saline, pH 7.2 .
Storage	Store at -20°C or lower. Aliquot to avoid repeated freezing and thawing.
Precautions	BFSP1 Antibody (monoclonal) (M01) is for research use only and not for use in diagnostic or therapeutic procedures.

### Background

---

More than 99% of the vertebrate ocular lens is comprised of terminally differentiated lens fiber cells. Two lens-specific intermediate filament-like proteins, CP49 (also known as phakinin) and the protein product of this gene, filensin, are expressed only after fiber cell differentiation has begun. Both proteins are found in a structurally unique cytoskeletal element that is referred to as the beaded filament (BF). Mutations in this gene are the cause of autosomal recessive cortical juvenile-onset cataract. Multiple transcript variants encoding different isoforms have been found for this gene.

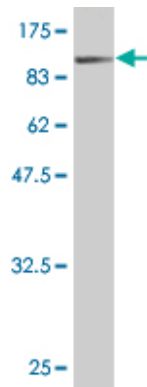
### References

---

Autosomal recessive juvenile onset cataract associated with mutation in BFSP1. Ramachandran RD, et al. Hum Genet, 2007 May. PMID 17225135. Generation and initial analysis of more than 15,000 full-length human and mouse cDNA sequences. Strausberg RL, et al. Proc Natl Acad Sci U S A, 2002 Dec 24. PMID 12477932. The DNA sequence and comparative analysis of human chromosome 20. Deloukas P, et al. Nature, 2001 Dec 20-27. PMID 11780052. An autosomal dominant posterior polar cataract locus maps to human chromosome 20p12-q12. Yamada K, et al. Eur J Hum Genet, 2000 Jul. PMID 10909854. Isolation of the human beaded-filament structural protein 1 gene (BFSP1) and assignment to chromosome 20p11.23-p12.1. Rendtorff ND, et al. Genomics, 1998 Oct 1. PMID 9787085.

## Images

---



Antibody Reactive Against Recombinant Protein. Western Blot detection against Immunogen (84.92 KDa) .

Please note: All products are 'FOR RESEARCH USE ONLY. NOT FOR USE IN DIAGNOSTIC OR THERAPEUTIC PROCEDURES'.