

BCL9 Antibody (monoclonal) (M01)

Mouse monoclonal antibody raised against a partial recombinant BCL9.
Catalog # AT1286a

Product Information

Application	WB, IF, E
Primary Accession	O00512
Other Accession	NM_004326
Reactivity	Human
Host	mouse
Clonality	monoclonal
Isotype	IgG1 kappa
Clone Names	2D4
Calculated MW	149290

Additional Information

Gene ID	607
Other Names	B-cell CLL/lymphoma 9 protein, B-cell lymphoma 9 protein, Bcl-9, Protein legless homolog, BCL9
Target/Specificity	BCL9 (NP_004317, 1036 a.a. ~ 1135 a.a) partial recombinant protein with GST tag. MW of the GST tag alone is 26 KDa.
Dilution	WB~~1:500~1000 IF~~1:50~200 E~~N/A
Format	Clear, colorless solution in phosphate buffered saline, pH 7.2 .
Storage	Store at -20°C or lower. Aliquot to avoid repeated freezing and thawing.
Precautions	BCL9 Antibody (monoclonal) (M01) is for research use only and not for use in diagnostic or therapeutic procedures.

Background

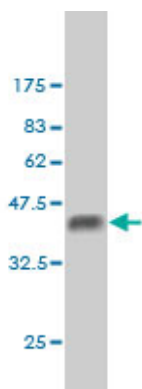
BCL9 is associated with B-cell acute lymphoblastic leukemia. It may be a target of translocation in B-cell malignancies with abnormalities of 1q21. Its function is unknown. The overexpression of BCL9 may be of pathogenic significance in B-cell malignancies.

References

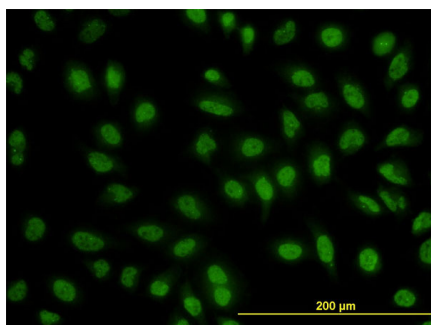
Allosteric remodelling of the histone H3 binding pocket in the Pygo2 PHD finger triggered by its binding to the B9L/BCL9 co-factor. Miller TC, et al. J Mol Biol, 2010 Sep 3. PMID 20637214. Variation at the NFATC2 Locus Increases the Risk of Thiazolinedione-Induced Edema in the Diabetes REduction Assessment with

ramipril and rosiglitazone Medication (DREAM) Study. Bailey SD, et al. Diabetes Care, 2010 Jul 13. PMID 20628086. Personalized smoking cessation: interactions between nicotine dose, dependence and quit-success genotype score. Rose JE, et al. Mol Med, 2010 Jul-Aug. PMID 20379614. Gene-centric association signals for lipids and apolipoproteins identified via the HumanCVD BeadChip. Talmud PJ, et al. Am J Hum Genet, 2009 Nov. PMID 19913121. BCL9 promotes tumor progression by conferring enhanced proliferative, metastatic, and angiogenic properties to cancer cells. Mani M, et al. Cancer Res, 2009 Oct 1. PMID 19738061.

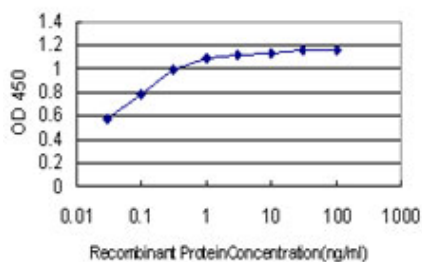
Images



Antibody Reactive Against Recombinant Protein. Western Blot detection against Immunogen (36.74 KDa) .



Immunofluorescence of monoclonal antibody to BCL9 on HeLa cell. [antibody concentration 10 ug/ml]



Detection limit for recombinant GST tagged BCL9 is approximately 0.03ng/ml as a capture antibody.

Please note: All products are 'FOR RESEARCH USE ONLY. NOT FOR USE IN DIAGNOSTIC OR THERAPEUTIC PROCEDURES'.