

ATP2C1 Antibody (monoclonal) (M01)

Mouse monoclonal antibody raised against a partial recombinant ATP2C1.

Catalog # AT1236a

Product Information

Application	WB, IF, IP, E
Primary Accession	P98194
Other Accession	BC028139
Reactivity	Human
Host	mouse
Clonality	monoclonal
Isotype	IgG1 lambda
Clone Names	2G1
Calculated MW	100577

Additional Information

Gene ID	27032
Other Names	Calcium-transporting ATPase type 2C member 1, ATPase 2C1, ATP-dependent Ca(2+) pump PMR1, ATP2C1, KIAA1347, PMR1L
Target/Specificity	ATP2C1 (AAH28139, 119 a.a. ~ 269 a.a) partial recombinant protein with GST tag. MW of the GST tag alone is 26 KDa.
Dilution	WB~~1:500~1000 IF~~1:50~200 IP~~N/A E~~N/A
Format	Clear, colorless solution in phosphate buffered saline, pH 7.2 .
Storage	Store at -20°C or lower. Aliquot to avoid repeated freezing and thawing.
Precautions	ATP2C1 Antibody (monoclonal) (M01) is for research use only and not for use in diagnostic or therapeutic procedures.

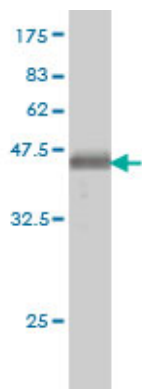
Background

The protein encoded by this gene belongs to the family of P-type cation transport ATPases. This magnesium-dependent enzyme catalyzes the hydrolysis of ATP coupled with the transport of the calcium. Defects in this gene cause Hailey-Hailey disease, an autosomal dominant disorder. Alternatively spliced transcript variants encoding different isoforms have been identified.

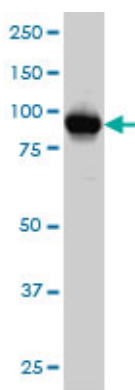
References

1. Golgi calcium pump secretory pathway calcium ATPase 1 (SPCA1) is a key regulator of insulin-like growth factor receptor (IGF1R) processing in the basal-like breast cancer cell line MDA-MB-231. Grice DM, Vetter I,

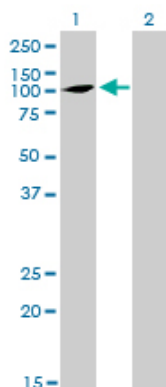
Images



Antibody Reactive Against Recombinant Protein. Western Blot detection against Immunogen (42.35 KDa) .

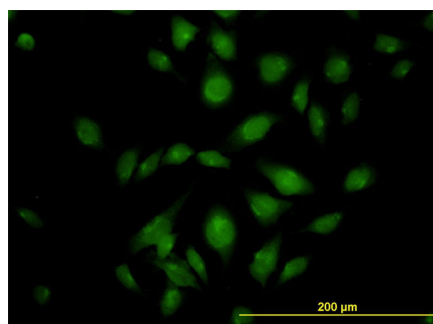


ATP2C1 monoclonal antibody (M01), clone 2G1 Western Blot analysis of ATP2C1 expression in HeLa (Cat # AT1236a)



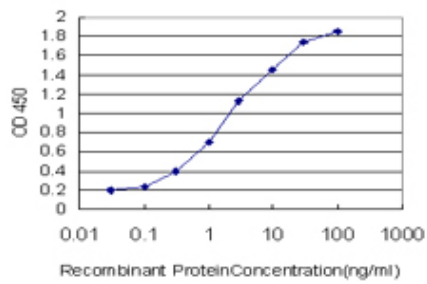
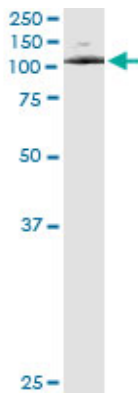
Western Blot analysis of ATP2C1 expression in transfected 293T cell line by ATP2C1 monoclonal antibody (M01), clone 2G1.

Lane 1: ATP2C1 transfected lysate(100.6 KDa).
Lane 2: Non-transfected lysate.

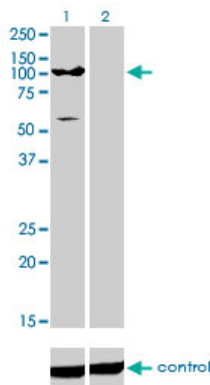


Immunofluorescence of monoclonal antibody to ATP2C1 on HeLa cell. [antibody concentration 10 ug/ml]

Immunoprecipitation of ATP2C1 transfected lysate using anti-ATP2C1 monoclonal antibody and Protein A Magnetic Bead ([U0007](#)), and immunoblotted with ATP2C1 MaxPab rabbit polyclonal antibody.



Detection limit for recombinant GST tagged ATP2C1 is approximately 0.03ng/ml as a capture antibody.



Western blot analysis of ATP2C1 over-expressed 293 cell line, cotransfected with ATP2C1 Validated Chimera RNAi (Cat # AT1236a)

Please note: All products are 'FOR RESEARCH USE ONLY. NOT FOR USE IN DIAGNOSTIC OR THERAPEUTIC PROCEDURES'.