

ANKS1 Antibody (monoclonal) (M02)

Mouse monoclonal antibody raised against a partial recombinant ANKS1.

Catalog # AT1144a

Product Information

Application	E
Primary Accession	Q92625
Other Accession	NM_015245
Reactivity	Human
Host	mouse
Clonality	monoclonal
Isotype	IgG1 Kappa
Clone Names	6B11
Calculated MW	123108

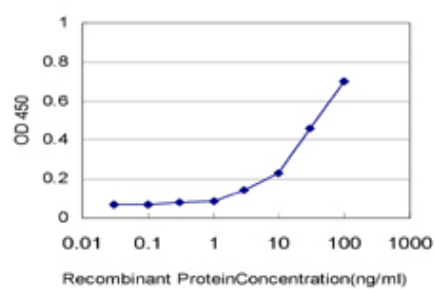
Additional Information

Gene ID	23294
Other Names	Ankyrin repeat and SAM domain-containing protein 1A, Odin, ANKS1A, ANKS1, KIAA0229, ODIN
Target/Specificity	ANKS1 (NP_056060, 1037 a.a. ~ 1132 a.a) partial recombinant protein with GST tag. MW of the GST tag alone is 26 KDa.
Dilution	E~~N/A
Format	Clear, colorless solution in phosphate buffered saline, pH 7.2 .
Storage	Store at -20°C or lower. Aliquot to avoid repeated freezing and thawing.
Precautions	ANKS1 Antibody (monoclonal) (M02) is for research use only and not for use in diagnostic or therapeutic procedures.

References

Trait-stratified genome-wide association study identifies novel and diverse genetic associations with serologic and cytokine phenotypes in systemic lupus erythematosus. Kariuki SN, et al. Arthritis Res Ther, 2010. PMID 20659327. Variation at the NFATC2 Locus Increases the Risk of Thiazolidinedione-Induced Edema in the Diabetes REduction Assessment with ramipril and rosiglitazone Medication (DREAM) Study. Bailey SD, et al. Diabetes Care, 2010 Jul 13. PMID 20628086. The role of height-associated loci identified in genome wide association studies in the determination of pediatric stature. Zhao J, et al. BMC Med Genet, 2010 Jun 14. PMID 20546612. Personalized smoking cessation: interactions between nicotine dose, dependence and quit-success genotype score. Rose JE, et al. Mol Med, 2010 Jul-Aug. PMID 20379614. Gene-centric association signals for lipids and apolipoproteins identified via the HumanCVD

Images



Detection limit for recombinant GST tagged ANKS1 is approximately 3ng/ml as a capture antibody.

Please note: All products are 'FOR RESEARCH USE ONLY. NOT FOR USE IN DIAGNOSTIC OR THERAPEUTIC PROCEDURES'.