

# ACAA2 Antibody (monoclonal) (M01)

Mouse monoclonal antibody raised against a partial recombinant ACAA2.

Catalog # AT1016a

## Product Information

---

<b>Application</b>	WB, IHC, IF, E
<b>Primary Accession</b>	<a href="#">P42765</a>
<b>Other Accession</b>	<a href="#">NM_006111</a>
<b>Reactivity</b>	Human
<b>Host</b>	mouse
<b>Clonality</b>	monoclonal
<b>Isotype</b>	IgG1 Kappa
<b>Clone Names</b>	5C4
<b>Calculated MW</b>	41924

## Additional Information

---

<b>Gene ID</b>	10449
<b>Other Names</b>	3-ketoacyl-CoA thiolase, mitochondrial, Acetyl-CoA acyltransferase, Beta-ketothiolase, Mitochondrial 3-oxoacyl-CoA thiolase, T1, ACAA2
<b>Target/Specificity</b>	ACAA2 (NP_006102, 151 a.a. ~ 260 a.a) partial recombinant protein with GST tag. MW of the GST tag alone is 26 KDa.
<b>Dilution</b>	WB~~1:500~1000 IHC~~1:100~500 IF~~1:50~200 E~~N/A
<b>Format</b>	Clear, colorless solution in phosphate buffered saline, pH 7.2 .
<b>Storage</b>	Store at -20°C or lower. Aliquot to avoid repeated freezing and thawing.
<b>Precautions</b>	ACAA2 Antibody (monoclonal) (M01) is for research use only and not for use in diagnostic or therapeutic procedures.

## Background

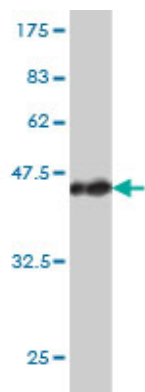
---

The encoded protein catalyzes the last step of the mitochondrial fatty acid beta-oxidation spiral. Unlike most mitochondrial matrix proteins, it contains a non-cleavable amino-terminal targeting signal.

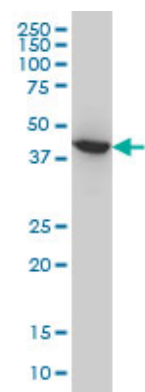
## References

---

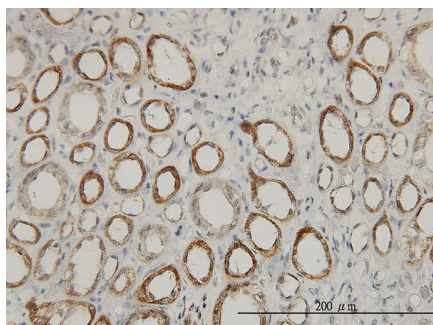
1.Opposing effects of dietary sugar and saturated fat on cardiovascular risk factors and glucose metabolism in mitochondrially impaired mice.Kuhlow D, Zarse K, Voigt A, Schulz TJ, Petzke KJ, Schomburg L, Pfeiffer AF, Ristow M.Eur J Nutr. 2010 Mar 10. [Epub ahead of print]



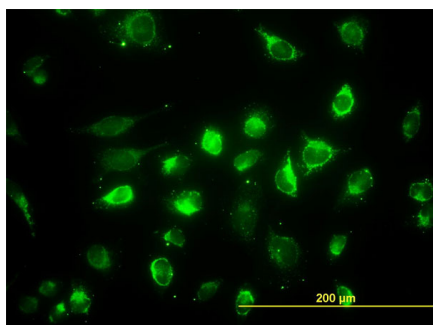
Antibody Reactive Against Recombinant Protein.Western Blot detection against Immunogen (37.84 KDa) .



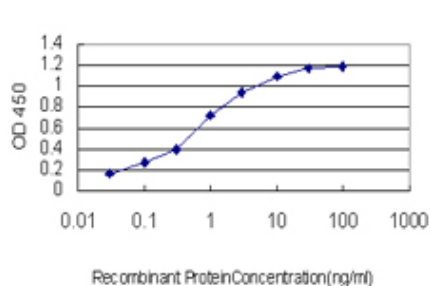
ACAA2 monoclonal antibody (M01), clone 5C4 Western Blot analysis of ACAA2 expression in HeLa ( (Cat # AT1016a )



Immunoperoxidase of monoclonal antibody to ACAA2 on formalin-fixed paraffin-embedded human kidney. [antibody concentration 3 ug/ml]



Immunofluorescence of monoclonal antibody to ACAA2 on HeLa cell. [antibody concentration 40 ug/ml]



Detection limit for recombinant GST tagged ACAA2 is approximately 0.1ng/ml as a capture antibody.

Please note: All products are 'FOR RESEARCH USE ONLY. NOT FOR USE IN DIAGNOSTIC OR THERAPEUTIC PROCEDURES'.