

ABL2 Antibody (monoclonal) (M09)

Mouse monoclonal antibody raised against a partial recombinant ABL2.

Catalog # AT1014a

Product Information

Application	WB, IHC, IF, E
Primary Accession	P42684
Other Accession	BC065912
Reactivity	Human
Host	mouse
Clonality	monoclonal
Isotype	IgG3 Kappa
Clone Names	5C6
Calculated MW	128343

Additional Information

Gene ID	27
Other Names	Abelson tyrosine-protein kinase 2, Abelson murine leukemia viral oncogene homolog 2, Abelson-related gene protein, Tyrosine-protein kinase ARG, ABL2, ABLL, ARG
Target/Specificity	ABL2 (AAH65912, 743 a.a. ~ 842 a.a) partial recombinant protein with GST tag. MW of the GST tag alone is 26 KDa.
Dilution	WB~~1:500~1000 IHC~~1:100~500 IF~~1:50~200 E~~N/A
Format	Clear, colorless solution in phosphate buffered saline, pH 7.2 .
Storage	Store at -20°C or lower. Aliquot to avoid repeated freezing and thawing.
Precautions	ABL2 Antibody (monoclonal) (M09) is for research use only and not for use in diagnostic or therapeutic procedures.

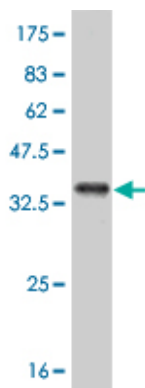
Background

This gene encodes a member of the Abelson family of nonreceptor tyrosine protein kinases. The protein is highly similar to the c-abl oncogene 1 protein, including the tyrosine kinase, SH2 and SH3 domains, and it plays a role in cytoskeletal rearrangements through its C-terminal F-actin- and microtubule-binding sequences. This gene is expressed in both normal and tumor cells, and is involved in translocation with the ets variant 6 gene in leukemia. Multiple alternatively spliced transcript variants encoding different protein isoforms have been found for this gene.

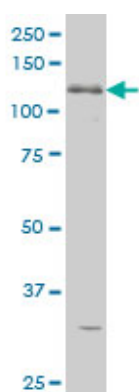
References

Variation at the NFATC2 Locus Increases the Risk of Thiazolinedinedione-Induced Edema in the Diabetes REduction Assessment with ramipril and rosiglitazone Medication (DREAM) Study. Bailey SD, et al. Diabetes Care, 2010 Jul 13. PMID 20628086. Successful treatment using omacetaxine for a patient with CML and BCR-ABL1 [corrected] 35INS. Mahadeo KM, et al. Blood, 2010 May 6. PMID 20448119. NMR structure of F-actin-binding domain of Arg/Abl2 from Homo sapiens. Liu G, et al. Proteins, 2010 Apr. PMID 20077570. Gene-centric association signals for lipids and apolipoproteins identified via the HumanCVD BeadChip. Talmud PJ, et al. Am J Hum Genet, 2009 Nov. PMID 19913121. Reciprocal regulation of Abl and receptor tyrosine kinases. Srinivasan D, et al. Cell Signal, 2009 Jul. PMID 19275932.

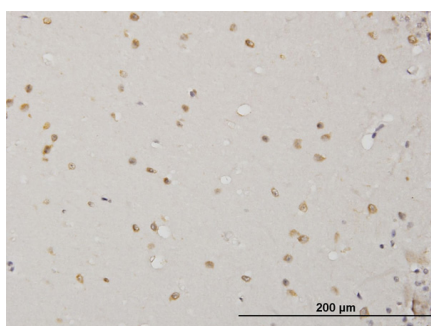
Images



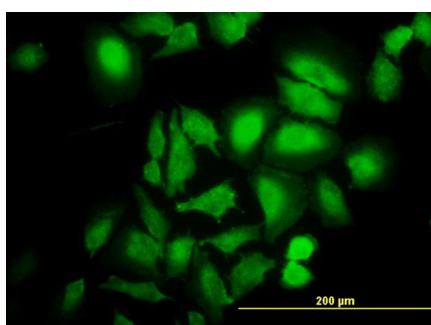
Antibody Reactive Against Recombinant Protein. Western Blot detection against Immunogen (36.41 KDa) .



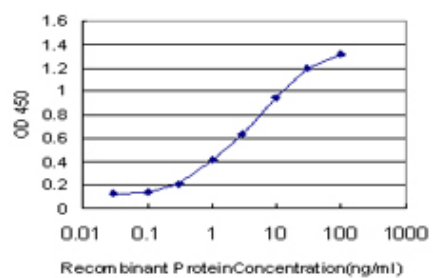
ABL2 monoclonal antibody (M09), clone 5C6 Western Blot analysis of ABL2 expression in K-562 (Cat # AT1014a)



Immunoperoxidase of monoclonal antibody to ABL2 on formalin-fixed paraffin-embedded human cerebellum. [antibody concentration 1.5 ug/ml]



Immunofluorescence of monoclonal antibody to ABL2 on HeLa cell. [antibody concentration 10 ug/ml]



Detection limit for recombinant GST tagged ABL2 is approximately 0.1ng/ml as a capture antibody.

Please note: All products are 'FOR RESEARCH USE ONLY. NOT FOR USE IN DIAGNOSTIC OR THERAPEUTIC PROCEDURES'.