

Chicken IgG F(c) Fluorescein

Catalog # ASR3282

Product Information

Description	CHICKEN IgG F(c) fragment Fluorescein conjugated
Conjugate	Fluorescein (FITC)
FP Value	1.0 moles Fluorescein (FITC) per mole of Chicken IgG F(c)
Physical State	Lyophilized
Host Isotype	IgG F(c)
Buffer	0.02 M Potassium Phosphate, 0.15 M Sodium Chloride, pH 7.2
Species of Origin	Chicken
Reconstitution Volume	1.0 mL
Reconstitution Buffer	Restore with deionized water (or equivalent)
Stabilizer	10 mg/mL Bovine Serum Albumin (BSA) - Immunoglobulin and Protease free
Preservative	0.01% (w/v) Sodium Azide

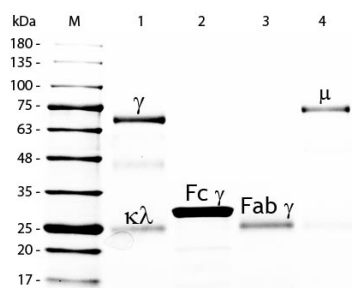
Additional Information

Shipping Condition	Ambient
Purity	This product was prepared from normal serum by delipidation, salt fractionation and ion change chromatography followed by papain digestion and extensive dialysis against the buffer stated above. Assay by immunoelectrophoresis resulted in a single precipitin arc against anti-Fluorescein, anti-Chicken IgG, anti-Chicken IgG F(c) and anti-Chicken Serum. No reaction was observed against anti-Chicken IgG F(ab') ₂ or anti-Papain.
Storage Condition	Store vial at 4° C prior to restoration. For extended storage aliquot contents and freeze at -20° C or below. Avoid cycles of freezing and thawing. Centrifuge product if not completely clear after standing at room temperature. This product is stable for several weeks at 4° C as an undiluted liquid. Dilute only prior to immediate use.
Precautions Note	This product is for research use only and is not intended for therapeutic or diagnostic applications.

Background

This product is designed for immunofluorescence microscopy, fluorescence based plate assays (FLISA) and fluorescent western blotting. This product is also suitable for multiplex analysis, including multicolor imaging, utilizing various commercial platforms.

Images



Conjugated (p/n ASR3282). Lane M: 5 μ L Opal Prestained Marker (p/n MB-210-0500). Lane 1: Reduced Chicken IgG Whole Molecule (p/n 003-0102). Lane 2: Reduced Chicken IgG F(c) Fragment Fluorescein Conjugated (p/n ASR3282). Lane 3: Reduced Chicken IgG F(ab) Fragment (p/n 003-0105). Lane 4: Reduced Chicken IgM Whole Molecule (p/n 003-0107). Load: 1 μ g per lane. Predicted/Observed size: IgG at 72 and 25 kDa; F(c) at 25 kDa; F(ab) at 25 kDa; IgM at 75 kDa. Observed F(c) Fragment migrates slightly higher. Other bands: Chicken IgG heavy chain alternative splicing variant at approximately 40 kDa in Lane 1.

Please note: All products are 'FOR RESEARCH USE ONLY. NOT FOR USE IN DIAGNOSTIC OR THERAPEUTIC PROCEDURES'.