

# Anti-Mouse IgG2a (Gamma 2a chain) (Alkaline Phosphatase Conjugated) Secondary Antibody

Rabbit Polyclonal, Alkaline Phosphatase (Calf Intestine)

Catalog # ASR3098

## Product Information

---

<b>Description</b>	Anti-MOUSE IgG2a (Gamma 2a chain) (RABBIT) Antibody Alkaline Phosphatase Conjugated
<b>Host</b>	Rabbit
<b>Conjugate</b>	Alkaline Phosphatase (Calf Intestine)
<b>Target Species</b>	Mouse
<b>Clonality</b>	Polyclonal
<b>Application</b>	WB, DB
<b>Physical State</b>	Liquid (sterile filtered)
<b>Host Isotype</b>	IgG
<b>Target Isotype</b>	IgG2a
<b>Buffer</b>	0.05 M Tris Chloride, 0.15M Sodium Chloride, 0.001M Magnesium Chloride, 0.0001M Zinc Chloride, 50% (v/v) Glycerol; pH 8.0
<b>Immunogen</b>	Mouse IgG2a heavy chain
<b>Stabilizer</b>	10 mg/mL Bovine Serum Albumin (BSA) - Immunoglobulin and Protease free
<b>Preservative</b>	0.1% (w/v) Sodium Azide

## Additional Information

---

<b>Shipping Condition</b>	Wet Ice
<b>Application Note</b>	<p>This product has been assayed against 1.0 <math>\mu</math>g of Mouse IgG in a standard capture ELISA using pNPP p-nitrophenyl phosphate code # NPP-10 as a substrate for 30 minutes at room temperature. A working dilution of 1:1,000 to 1:5,000 is suggested for this product. This product has been assayed against 1.0 <math>\mu</math>g of Mouse IgG in a standard capture ELISA using pNPP p-nitrophenyl phosphate code # NPP-10 as a substrate for 30 minutes at room temperature. A working dilution of 1:1,000 to 1:5,000 is suggested for this product. This product has been assayed against 1.0 <math>\mu</math>g of Mouse IgG in a standard capture ELISA using pNPP p-nitrophenyl phosphate code # NPP-10 as a substrate for 30 minutes at room temperature. A working dilution of 1:1,000 to 1:5,000 is suggested for this product. This product has been assayed against 1.0 <math>\mu</math>g of Mouse IgG in a standard capture ELISA using pNPP p-nitrophenyl phosphate code # NPP-10 as a substrate for 30 minutes at room temperature. A working dilution of 1:1,000 to 1:5,000 is suggested for this product. This product has been assayed against 1.0 <math>\mu</math>g of Mouse IgG in a standard capture ELISA using pNPP p-nitrophenyl phosphate code # NPP-10 as a substrate for 30 minutes at room temperature. A working dilution of 1:1,000 to 1:5,000 is suggested for this product. This product has been assayed against 1.0 <math>\mu</math>g of Mouse IgG in a standard capture ELISA using pNPP p-nitrophenyl phosphate code # NPP-10 as a substrate for 30 minutes at room temperature. A working dilution of 1:1,000 to 1:5,000 is suggested for this product.</p>
<b>Purity</b>	This product was prepared from monospecific antiserum by immunoaffinity chromatography using antigens coupled to agarose beads followed by solid

phase adsorption(s) to remove any unwanted reactivities. Assay by immunoelectrophoresis resulted in a single precipitin arc against anti-Alkaline Phosphatase (calf intestine) and anti-Rabbit Serum. Specificity was confirmed by ELISA at less than 1% cross reactivity against other mouse heavy or light chain isotypes.

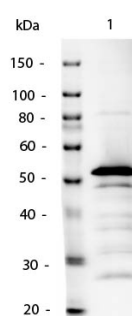
### Storage Condition

Store vial at 4° C before opening. DO NOT FREEZE. This product is stable at 4° C as an undiluted liquid. Dilute only prior to immediate use. Freezing alkaline phosphatase conjugates will result in a substantial loss of enzymatic activity.

### Precautions Note

This product is for research use only and is not intended for therapeutic or diagnostic applications.

## Images



Western Blot of Mouse IgG2a Antibody Alkaline Phosphatase Conjugated. Lane 1: Mouse IgG2a. Lane 2: none. Load: 50ng per lane. Primary antibody: none. Secondary antibody: Mouse IgG2a Antibody Alkaline Phosphatase Conjugated at 1:1,000 o/n at 4°C. Block: MB-070 for 30 min at RT. Reaction visualized with alkaline phosphatase substrate for 30 seconds at RT. Predicted/Observed size: 55kDa for Mouse IgG2a.



Dot Blot of Mouse IgG2a Antibody Alkaline Phosphatase Conjugated. Antigen: Mouse IgG2a Load: Lane 1 - 200ng Lane 2 - 66.7ng Lane 3 - 22.2ng Lane 4 - 7.4 Lane 2.5ng Primary antibody: none Secondary antibody: Mouse IgG2a Antibody Alkaline Phosphatase Conjugated at 1:1,000 for 60 min at RT. Block: MB-070 for 60 min at RT Reaction visualized using alkaline phosphatase substrate for 30 seconds at RT.

Please note: All products are 'FOR RESEARCH USE ONLY. NOT FOR USE IN DIAGNOSTIC OR THERAPEUTIC PROCEDURES'.