

Anti-Mouse IgG1 (Alkaline Phosphatase Conjugated) Secondary Antibody

Rabbit Polyclonal, Alkaline Phosphatase (Calf Intestine)

Catalog # ASR3097

Product Information

Description	Anti-MOUSE IgG1 (Gamma 1 chain) (RABBIT) Antibody Alkaline Phosphatase Conjugated
Host	Rabbit
Conjugate	Alkaline Phosphatase (Calf Intestine)
Target Species	Mouse
Clonality	Polyclonal
Application	WB, DB
Physical State	Liquid (sterile filtered)
Host Isotype	IgG
Target Isotype	IgG1
Buffer	0.05 M Tris Chloride, 0.15M Sodium Chloride, 0.001M Magnesium Chloride, 0.0001M Zinc Chloride, 50% (v/v) Glycerol; pH 8.0
Immunogen	Mouse IgG1 heavy chain
Stabilizer	10 mg/mL Bovine Serum Albumin (BSA) - Immunoglobulin and Protease free
Preservative	0.01% (w/v) Sodium Azide

Additional Information

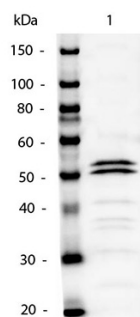
Shipping Condition	Wet Ice
Purity	IgG1 antibody was prepared from monospecific antiserum by immunoaffinity chromatography using antigens coupled to agarose beads followed by solid phase adsorption(s) to remove any unwanted reactivities. Assay by immunoelectrophoresis resulted in a single precipitin arc against anti-Alkaline Phosphatase (calf intestine) and anti-Rabbit Serum. Specificity was confirmed by ELISA at less than 1% cross reactivity against other mouse heavy or light chain isotypes.
Storage Condition	Store vial at 4° C before opening. DO NOT FREEZE. This product is stable at 4° C as an undiluted liquid. Dilute only prior to immediate use. Freezing alkaline phosphatase conjugates will result in a substantial loss of enzymatic activity.
Precautions Note	This product is for research use only and is not intended for therapeutic or diagnostic applications.

Background

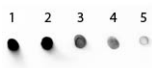
Mouse IgG1 secondary antibody conjugated to Alkaline Phosphatase is available in a variety of formats. Anti Mouse IgG1 secondary antibody conjugate is suitable for ELISA, Immunohistochemistry western

blotting as well as other anti IgG1 antibody based assays.

Images



Western Blot of Mouse IgG1 Secondary Antibody Alkaline Phosphatase Conjugated. Lane 1: Mouse IgG1. Lane 2: none. Load: 50ng per lane. Primary antibody: none. Secondary antibody: Mouse IgG1 Secondary Antibody Alkaline Phosphatase Conjugated at 1:1,000 o/n at 4°C. Block: MB-070 for 30 min at RT. Reaction visualized using alkaline phosphatase substrate for 30 seconds. Predicted/Observed size: 55 kDa for Mouse IgG1.



Dot Blot of Mouse IgG1 Secondary Antibody Alkaline Phosphatase Conjugated. Antigen: Mouse IgG1. Load: Lane 1 - 200ng Lane 2 - 66.7ng Lane 3 - 22.2ng Lane 4 - 7.4ng Lane 5 - 2.5ng. Primary antibody: none. Secondary antibody: Mouse IgG1 Secondary Antibody Alkaline Phosphatase Conjugated at 1:1,000 for one hour at RT. Block: MB-070 for 60 min at RT. Reaction visualized using alkaline phosphatase substrate for 30 seconds at RT.

Please note: All products are 'FOR RESEARCH USE ONLY. NOT FOR USE IN DIAGNOSTIC OR THERAPEUTIC PROCEDURES'.