

# Anti-HUMAN IgG gamma Secondary Antibody

Goat Polyclonal, Alkaline Phosphatase (Calf Intestine)

Catalog # ASR3089

## Product Information

---

<b>Description</b>	Anti-HUMAN IgG (gamma chain) (GOAT) Antibody Alkaline Phosphatase Conjugated
<b>Host</b>	Goat
<b>Conjugate</b>	Alkaline Phosphatase (Calf Intestine)
<b>Target Species</b>	Human
<b>Clonality</b>	Polyclonal
<b>Application</b>	WB
<b>Physical State</b>	Liquid (sterile filtered)
<b>Host Isotype</b>	IgG
<b>Target Isotype</b>	IgG (gamma chain)
<b>Buffer</b>	0.05 M Tris Chloride, 0.15M Sodium Chloride, 0.001M Magnesium Chloride, 0.0001M Zinc Chloride, 50% (v/v) Glycerol; pH 8.0
<b>Immunogen</b>	Human IgG gamma heavy chain
<b>Stabilizer</b>	10 mg/mL Bovine Serum Albumin (BSA) - Immunoglobulin and Protease free
<b>Preservative</b>	0.01% (w/v) Sodium Azide

## Additional Information

---

<b>Shipping Condition</b>	Wet Ice
<b>Application Note</b>	Anti-Human IgG (gamma chain) Antibody is suitable for use in immunoelectrophoresis, western-blot, competitive western-blot, ELISA and competitive ELISA assays. Specific conditions for reactivity and signal detection should be optimized by the end user.
<b>Purity</b>	Human IgG (gamma chain) Antibody was prepared from monospecific antiserum by immunoaffinity chromatography using antigens coupled to agarose beads followed by solid phase adsorption(s) to remove any unwanted reactivities. Assay by immunoelectrophoresis resulted in a single precipitin arc against anti-Alkaline Phosphatase (calf intestine), Human IgG, Human serum and anti-Goat Serum. Specificity was confirmed by ELISA minimal cross reactivity against other Human heavy or light chain isotypes.
<b>Storage Condition</b>	Store vial at 4° C before opening. DO NOT FREEZE. This product is stable at 4° C as an undiluted liquid. Dilute only prior to immediate use. Freezing alkaline phosphatase conjugates will result in a substantial loss of enzymatic activity.
<b>Precautions Note</b>	This product is for research use only and is not intended for therapeutic or diagnostic applications.

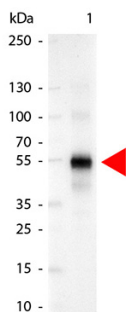
## Background

---

Anti-Human IgG (gamma chain) Antibody generated in Goat detects specifically human IgG gamma heavy chain. This secondary antibody anti-Human is ideal for investigators who routinely perform ELISA, Sandwich ELISA, titration assays, western-blot, immunoprecipitation and more generally immunoassays. Anti-Human IgG (gamma chain) Antibody is ideal for investigators in Immunology, Cancer. and Microbiology research.

## Images

---



Western Blot of Alkaline Phosphatase Conjugated Goat anti-Human IgG Gamma Chain antibody. Lane 1: Human IgG. Lane 2: none. Load: 50 ng per lane. Primary antibody: none. Secondary antibody: Alkaline Phosphatase human secondary antibody at 1:1,000 for 60 min at RT. Block: MB-070 for 30 min RT. Predicted/Observed size: 55 kDa for Human IgG Gamma Chain. Other band(s): none.

Please note: All products are 'FOR RESEARCH USE ONLY. NOT FOR USE IN DIAGNOSTIC OR THERAPEUTIC PROCEDURES'.