

Anti-Chicken IgG (H&L) (Alkaline Phosphatase Conjugated) (Pre-Adsorbed) Secondary Antibody

Donkey Polyclonal, Alkaline Phosphatase (Calf Intestine)
Catalog # ASR3041

Product Information

Description	Anti-CHICKEN IgG (H&L) (DONKEY) Antibody Alkaline Phosphatase Conjugated (Min X Bv Gt GP Ham Hs Hu Ms Rb Rt & Sh Serum Proteins)
Host	Donkey
Conjugate	Alkaline Phosphatase (Calf Intestine)
Target Species	Chicken
Reactivity	Chicken
Clonality	Polyclonal
Application	WB
Physical State	Liquid (sterile filtered)
Host Isotype	IgG
Target Isotype	IgG (H&L)
Buffer	0.05 M Tris Chloride, 0.15M Sodium Chloride, 0.001M Magnesium Chloride, 0.0001M Zinc Chloride, 50% (v/v) Glycerol; pH 8.0
Immunogen	Chicken IgG whole molecule
Stabilizer	10 mg/mL Bovine Serum Albumin (BSA) - Immunoglobulin and Protease free
Preservative	0.1% (w/v) Sodium Azide

Additional Information

Shipping Condition	Wet Ice
Application Note	Anti-Chicken IgG (H&L) antibody is suitable for immunoblotting (western or dot blot), ELISA, immunoelectron microscopy and immunohistochemistry as well as other antibody based enzymatic assays requiring lot-to-lot consistency.
Purity	This product was prepared from monospecific antiserum by immunoaffinity chromatography using Chicken IgG coupled to agarose beads followed by conjugation to fluorochrome and extensive dialysis against the buffer stated above. Assay by immunoelectrophoresis resulted in a single precipitin arc against anti-Donkey Serum, Chicken IgG and Chicken Serum. No reaction was observed against Bovine, Goat, Guinea Pig, Hamster, Horse, Human, Mouse, Rabbit, Rat and Sheep Serum Proteins. This antibody will react with heavy chains of Chicken IgG and with light chains of most Chicken immunoglobulins.
Storage Condition	Store vial at 4° C before opening. DO NOT FREEZE. This product is stable at 4° C as an undiluted liquid. Dilute only prior to immediate use. Freezing alkaline phosphatase conjugates will result in a substantial loss of enzymatic activity.

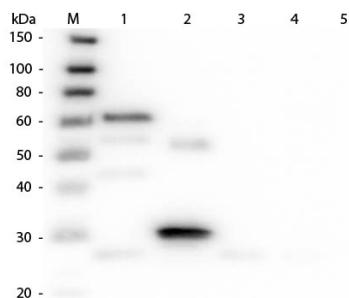
Precautions Note

This product is for research use only and is not intended for therapeutic or diagnostic applications.

Background

Anti-Chicken IgG (H&L) Antibody detects specifically Chicken IgG whole molecule. Anti-Chicken IgG (H&L) is ideal for investigators who routinely perform ELISA, Sandwich ELISA, titration assays, western-blot, immunoprecipitation and more generally immunoassays. Anti-Chicken IgG (H&L) Antibody is ideal for investigators in Cancer, Immunology, and Microbiology research.

Images



Western Blot of Anti-Chicken IgG (H&L) (DONKEY) Antibody (Min X Bv Gt GP Ham Hs Hu Ms Rb Rt & Sh Serum Proteins) (p/n 603-701-C37). Lane M: 3 μ l Molecular Ladder. Lane 1: Chicken IgG whole molecule (p/n 003-0102). Lane 2: Chicken IgG F(c) Fragment (p/n 003-0103). Lane 3: Chicken IgG F(ab) Fragment (p/n 003-0105). Lane 4: Chicken IgM Whole Molecule (p/n 003-0107). Lane 5: Chicken Serum (p/n D302-05). All samples were reduced. Load: 50 ng per lane. Block: MB-070 for 30 min at RT. Primary Antibody: Anti-Chicken IgG (H&L) (DONKEY) Antibody (Min X Bv Gt GP Ham Hs Hu Ms Rb Rt & Sh Serum Proteins) (p/n 603-701-C37) 1:3,000 for 60 min at RT. Secondary antibody: Anti-Donkey IgG (GOAT) Peroxidase Conjugated Antibody (p/n 616-1302) 1:40,000 in MB-070 for 30 min at RT. Predicted/Observed Size: 25 and 72 kDa for Chicken IgG and Serum, 25 kDa for F(c) and F(ab), 75 kDa for IgM. Chicken F(c) migrates slightly higher.

Please note: All products are 'FOR RESEARCH USE ONLY. NOT FOR USE IN DIAGNOSTIC OR THERAPEUTIC PROCEDURES'.