

Anti-Rat IgM (mu chain) (Biotin Conjugated) Secondary Antibody

Rabbit Polyclonal, Biotin
Catalog # ASR2858

Product Information

Description	Anti-RAT IgM (mu chain) (RABBIT) Antibody Biotin Conjugated
Host	Rabbit
Conjugate	Biotin
Target Species	Rat
Clonality	Polyclonal
Application	WB
Physical State	Lyophilized
Host Isotype	IgG
Target Isotype	IgM μ chain
Buffer	0.02 M Potassium Phosphate, 0.15 M Sodium Chloride, pH 7.2
Immunogen	Rat IgM mu heavy chain
Reconstitution Volume	1.0 mL
Reconstitution Buffer	Restore with deionized water (or equivalent)
Stabilizer	10 mg/mL Bovine Serum Albumin (BSA) - Immunoglobulin and Protease free
Preservative	0.01% (w/v) Sodium Azide

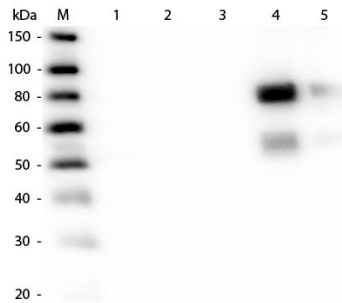
Additional Information

Shipping Condition	Ambient
Application Note	Anti-RAT IgM (mu chain) Antibody has been assayed against Rat IgM in a standard capture ELISA using Peroxidase Conjugated Streptavidin. A working dilution of 1:15,000 to 1:70,000 of the concentration is suggested for this product. Rat IgM antibody is suitable for immunosassays including western blot and ELISA.
Purity	Anti-RAT IgM (mu chain) Antibody was prepared from monospecific antiserum by immunoaffinity chromatography using Rat IgM coupled to agarose beads followed by solid phase adsorption(s) to remove any unwanted reactivities. Purified Anti-RAT IgM was Biotin Conjugated. Assay by immunoelectrophoresis resulted in a single precipitin arc against anti-biotin, anti-Rabbit Serum, Rat IgM and Rat Serum. No reaction was observed against Rat IgA or Rat IgG.
Storage Condition	Store vial at 4° C prior to restoration. For extended storage aliquot contents and freeze at -20° C or below. Avoid cycles of freezing and thawing. Centrifuge product if not completely clear after standing at room temperature. This product is stable for several weeks at 4° C as an undiluted liquid. Dilute only prior to immediate use.
Precautions Note	This product is for research use only and is not intended for therapeutic or

Background

Rat IgM antibody recognizes the mu chain of the Rat IgM. Assay by immunoelectrophoresis resulted in a single precipitin arc against anti-Biotin, anti-Rabbit Serum, Rat IgM and Rat Serum. No reaction was observed against Rat IgA or Rat IgG. ELISA was used to confirm specificity at less than 1% cross reactivity against other rat heavy or light chain isotypes. Anti-Rat IgM antibody is ideal with investigators involved in serum component protein research.

Images



Western Blot of Anti-Rat IgM (mu chain) (RABBIT) Antibody (p/n 612-4107). Lane M: 3 μ l Molecular Ladder. Lane 1: Rat IgG whole molecule (p/n 012-0102). Lane 2: Rat IgG F(c) Fragment (p/n 012-0103). Lane 3: Rat IgG F(ab) Fragment (p/n 012-0105). Lane 4: Rat IgM Whole Molecule (p/n 012-0107). Lane 5: Rat Serum (p/n D310-05). All samples were reduced. Load: 50 ng per lane. Block: MB-070 for 30 min at RT. Primary Antibody: Anti-Rat IgM (mu chain) (RABBIT) Antibody (p/n 612-4107) 1:2,000 for 60 min at RT. Secondary Antibody: Anti-Rabbit IgG (GOAT) Peroxidase Conjugated Antibody (p/n 611-103-122) 1:40,000 in MB-070 for 30 min at RT. Predicted/Obsevered Size: 25 and 55 kDa for Rat IgG and Serum, 25 kDa for F(c) and F(ab), 78 and 25 kDa for IgM. Rat F(c) migrates slightly higher.

Please note: All products are 'FOR RESEARCH USE ONLY. NOT FOR USE IN DIAGNOSTIC OR THERAPEUTIC PROCEDURES'.