

# Anti-Rabbit IgG (H&L) (Fluorescein Conjugated) Pre-Adsorbed Secondary Antibody

Goat Polyclonal, Fluorescein (FITC)

Catalog # ASR2764

## Product Information

---

<b>Description</b>	Anti-RABBIT IgG (H&L) (GOAT) Antibody Fluorescein Conjugated (Min X Bv Ch Gt GP Ham Hs Hu Ms Rt & Sh Serum Proteins)
<b>Host</b>	Goat
<b>Conjugate</b>	Fluorescein (FITC)
<b>FP Value</b>	3.3 moles Fluorescein (FITC) per mole of IgG
<b>Target Species</b>	Rabbit
<b>Clonality</b>	Polyclonal
<b>Application</b>	WB
<b>Physical State</b>	Lyophilized
<b>Host Isotype</b>	IgG
<b>Target Isotype</b>	IgG (H&L)
<b>Buffer</b>	0.02 M Potassium Phosphate, 0.15 M Sodium Chloride, pH 7.2
<b>Immunogen</b>	Rabbit IgG whole molecule
<b>Reconstitution Volume</b>	1.0 mL
<b>Reconstitution Buffer</b>	Restore with deionized water (or equivalent)
<b>Stabilizer</b>	10 mg/mL Bovine Serum Albumin (BSA) - Immunoglobulin and Protease free
<b>Preservative</b>	0.01% (w/v) Sodium Azide

## Additional Information

---

<b>Shipping Condition</b>	Ambient
<b>Application Note</b>	When choosing a secondary antibody product, consideration must be given to species and immunoglobulin specificity, conjugate type, fragment and chain specificity, level of cross-reactivity, and host-species source and fragment.
<b>Purity</b>	Secondary antibody conjugate was prepared from monospecific antiserum by immunoaffinity chromatography using Rabbit IgG coupled to agarose beads followed by solid phase adsorption(s) to remove any unwanted reactivities. Assay by immunoelectrophoresis resulted in a single precipitin arc against anti-Fluorescein, anti-Goat Serum, Rabbit IgG and Rabbit Serum. No reaction was observed against Bovine, Chicken, Goat, Guinea Pig, Hamster, Horse, Human, Mouse, Rat or Sheep Serum Proteins.
<b>Storage Condition</b>	Store secondary antibody at 4° C prior to restoration. For extended storage aliquot antibody and freeze at -20° C or below. Avoid cycles of freezing and thawing. Centrifuge product if not completely clear after standing at room temperature. This product is stable for several weeks at 4° C as an undiluted liquid. Dilute only prior to immediate use.

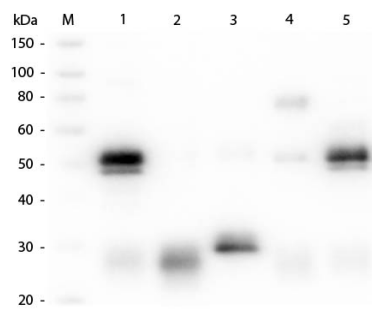
**Precautions Note**

This product is for research use only and is not intended for therapeutic or diagnostic applications.

**Background**

Anti-Rabbit secondary antibody conjugated to FITC is designed for immunofluorescence microscopy, fluorescence based plate assays (FLISA) and fluorescent western blotting. This product is also suitable for multiplex analysis, including multicolor imaging, utilizing various commercial platforms.

**Images**



Western Blot of Anti-Rabbit IgG (H&L) (GOAT) Antibody (Min X Bv, Ch, Gt, GP, Ham, Hs, Hu, Ms, Rt & Sh Serum Proteins) (p/n 611-101-122). Lane M: 3  $\mu$ l Molecular Ladder. Lane 1: Rabbit IgG whole molecule (p/n 011-0102). Lane 2: Rabbit IgG F(ab) Fragment (p/n 011-0105). Lane 3: Rabbit IgG F(c) Fragment (p/n 010-0103). Lane 4: Rabbit IgM Whole Molecule (p/n 011-0107). Lane 5: Normal Rabbit Serum (p/n B309). All samples were reduced. Load: 50 ng per lane. Block: MB-070 for 30 min at RT. Primary Antibody: Anti-Rabbit IgG (H&L) (GOAT) Antibody (Min X Bv, Ch, Gt, GP, Ham, Hs, Hu, Ms, Rt & Sh Serum Proteins) (p/n 611-101-122) 1:1,000 for 60 min at RT. Secondary antibody: Anti-Goat IgG (DONKEY) Peroxidase Conjugated Antibody (p/n CUST10) 1:40,000 in MB-070 for 30 min at RT. Predicted/Obsevered Size: 25 and 50 kDa for Rabbit IgG and Serum, 25 kDa for F(c) and F(ab), 70 and 23 kDa for IgM. Rabbit F(c) migrates slightly higher.

Please note: All products are 'FOR RESEARCH USE ONLY. NOT FOR USE IN DIAGNOSTIC OR THERAPEUTIC PROCEDURES'.