

Anti-Mouse IgG (gamma chain) (Rhodamine Conjugated) Secondary Antibody

Rabbit Polyclonal, Rhodamine (TRITC)
Catalog # ASR2740

Product Information

Description	Anti-MOUSE IgG (gamma chain) (RABBIT) Antibody Rhodamine Conjugated
Host	Rabbit
Conjugate	Rhodamine (TRITC)
FP Value	2.9 moles Rhodamine (TRITC) per mole of IgG
Target Species	Mouse
Clonality	Polyclonal
Application	DB
Physical State	Lyophilized
Host Isotype	IgG
Target Isotype	IgG (gamma chain)
Buffer	0.02 M Potassium Phosphate, 0.15 M Sodium Chloride, pH 7.2
Immunogen	Mouse IgG gamma heavy chain
Reconstitution Volume	1.0 mL
Reconstitution Buffer	Restore with deionized water (or equivalent)
Stabilizer	10 mg/mL Bovine Serum Albumin (BSA) - Immunoglobulin and Protease free
Preservative	0.01% (w/v) Sodium Azide

Additional Information

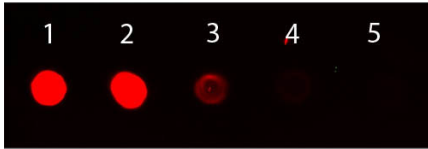
Shipping Condition	Ambient
Purity	This product was prepared from monospecific antiserum by immunoaffinity chromatography using Mouse IgG coupled to agarose beads followed by solid phase adsorption(s) to remove any unwanted reactivities. Assay by immunoelectrophoresis resulted in a single precipitin arc against anti-Rabbit Serum, Mouse IgG, and Mouse Serum. Less than 1% cross reactivity was observed by ELISA against other Mouse heavy and light chain proteins.
Storage Condition	Store vial at 4° C prior to restoration. For extended storage aliquot contents and freeze at -20° C or below. Avoid cycles of freezing and thawing. Centrifuge product if not completely clear after standing at room temperature. This product is stable for several weeks at 4° C as an undiluted liquid. Dilute only prior to immediate use.
Precautions Note	This product is for research use only and is not intended for therapeutic or diagnostic applications.

Background

This product is designed for immunofluorescence microscopy, fluorescence based plate assays (FLISA) and

fluorescent western blotting. This product is also suitable for multiplex analysis, including multicolor imaging, utilizing various commercial platforms.

Images



Dot Blot of Rabbit anti-Mouse IgG (gamma chain) Antibody Rhodamine Conjugated. Antigen: Mouse IgG. Load: Lane 1 - 100 ng Lane 2 - 33.3 ng Lane 3 - 11.1 ng Lane 4 - 3.70 ng Lane 5 - 1.23 ng. Primary antibody: n/a. Secondary antibody: Rabbit anti-Mouse IgG (gamma chain) Antibody Rhodamine Conjugated at 1:1,000 for 60 min at RT. Block: MB-070 for 1 HR at RT.

Please note: All products are 'FOR RESEARCH USE ONLY. NOT FOR USE IN DIAGNOSTIC OR THERAPEUTIC PROCEDURES'.