

Anti-MOUSE IgG2a (Rhodamine Conjugated)

Pre-adsorbed Secondary Antibody

Goat Polyclonal, Rhodamine (TRITC)

Catalog # ASR2708

Product Information

Description	Anti-MOUSE IgG2a (Gamma 2a chain) (GOAT) Antibody Rhodamine Conjugated (Min Cross Bv, Hu, and Rb Serum Proteins)
Host	Goat
Conjugate	Rhodamine (TRITC)
FP Value	3.1 moles Rhodamine (TRITC) per mole of IgG
Target Species	Mouse
Reactivity	Mouse
Clonality	Polyclonal
Application	DB
Physical State	Lyophilized
Host Isotype	IgG
Target Isotype	IgG2a
Buffer	0.02 M Potassium Phosphate, 0.15 M Sodium Chloride, pH 7.2
Immunogen	Mouse IgG2a heavy chain
Reconstitution Volume	1.0 mL
Reconstitution Buffer	Restore with deionized water (or equivalent)
Stabilizer	10 mg/mL Bovine Serum Albumin (BSA) - Immunoglobulin and Protease free
Preservative	0.01% (w/v) Sodium Azide

Additional Information

Shipping Condition	Ambient
Application Note	Anti-Mouse IgG2a secondary antibody is suitable for ELISA, Immunohistochemistry western blotting as well as other anti IgG2a antibody based assays.
Purity	MOUSE IgG2a Antibody was prepared from monospecific antiserum by immunoaffinity chromatography using antigens coupled to agarose beads followed by solid phase adsorption(s) to remove any unwanted reactivities. Assay by immunoelectrophoresis resulted in a single precipitin arc against anti-Goat Serum, Mouse Serum and Mouse IgG2a. Specificity was confirmed by ELISA at less than 1% cross-reactivity against other mouse heavy or light chain isotypes. No reaction was observed against Bovine, Human, and Rabbit Serum Proteins. Specificity was confirmed by ELISA at less than 1% of target signal.
Storage Condition	Store vial at 4° C prior to restoration. For extended storage aliquot contents and freeze at -20° C or below. Avoid cycles of freezing and thawing. Centrifuge product if not completely clear after standing at room temperature. This product is stable for several weeks at 4° C as an undiluted liquid. Dilute only

prior to immediate use.

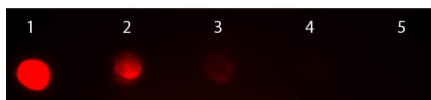
Precautions Note

This product is for research use only and is not intended for therapeutic or diagnostic applications.

Background

Mouse IgG2a secondary antibody is available in a variety of formats. Rhodamine secondaries are designed for immunofluorescence microscopy, fluorescence based plate assays (FLISA) and fluorescent western blotting. This product is also suitable for multiplex analysis, including multicolor imaging, utilizing various commercial platforms.

Images



Dot Blot of Goat anti-Mouse IgG2a Antibody Rhodamine Conjugated Pre-absorbed. Antigen: Mouse IgG2a. Load: Lane 1 - 200 ng Lane 2 - 66.7 ng Lane 3 - 22.2 ng Lane 4 - 7.41 ng Lane 5 - 2.47 ng. Primary antibody: n/a. Secondary antibody: Goat anti-Mouse IgG2a Antibody Rhodamine Conjugated Pre-absorbed at 1:1,000 overnight at 4°C. Block: MB-070 for 1 HR at RT.

Please note: All products are 'FOR RESEARCH USE ONLY. NOT FOR USE IN DIAGNOSTIC OR THERAPEUTIC PROCEDURES'.