

Anti-Rat IgG (H&L) (Peroxidase Conjugated) Secondary Antibody

Chicken Polyclonal, Peroxidase (Horseradish)

Catalog # ASR2499

Product Information

| | |
|------------------------------|--|
| Description | Anti-RAT IgG (H&L) (CHICKEN) Antibody Peroxidase Conjugated |
| Host | Chicken |
| Conjugate | Peroxidase (Horseradish) |
| Target Species | Rat |
| Clonality | Polyclonal |
| Application | WB |
| Physical State | Lyophilized |
| Host Isotype | IgG |
| Target Isotype | IgG (H&L) |
| Buffer | 0.02 M Potassium Phosphate, 0.15 M Sodium Chloride, pH 7.2 |
| Immunogen | Rat IgG whole molecule |
| Reconstitution Volume | 1.0 mL |
| Reconstitution Buffer | Restore with deionized water (or equivalent) |
| Stabilizer | 10 mg/mL Bovine Serum Albumin (BSA) - Immunoglobulin and Protease free |
| Preservative | 0.01% (w/v) Gentamicin Sulfate. Do NOT add Sodium Azide! |

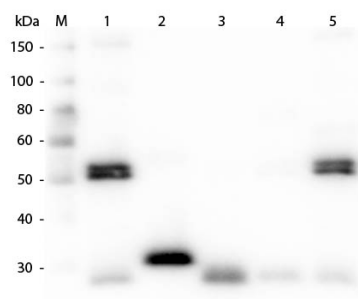
Additional Information

| | |
|---------------------------|---|
| Shipping Condition | Ambient |
| Application Note | Anti-RAT IgG antibody, Peroxidase Conjugate has been assayed against 1.0 ug of Rat IgG in a standard capture ELISA using ABTS (2,2'-azino-bis-[3-ethylbenthiazoline-6-sulfonic acid] substrate for 30 minutes at room temperature. A working dilution of 1:2,000 to 1:12,000 of the reconstitution concentration is suggested for this product. Optimal concentration in other immunoassays should be determined by researcher. |
| Purity | Anti-RAT IgG antibody, Peroxidase Conjugate, was prepared from monospecific antiserum by immunoaffinity chromatography using Rat IgG coupled to agarose. Assay by immunoelectrophoresis resulted in a single precipitin arc against anti-Peroxidase, anti-Chicken Serum, Rat IgG and Rat Serum. |
| Storage Condition | Store vial at 4° C prior to restoration. For extended storage aliquot contents and freeze at -20° C or below. Avoid cycles of freezing and thawing. Centrifuge product if not completely clear after standing at room temperature. This product is stable for several weeks at 4° C as an undiluted liquid. Dilute only prior to immediate use. |
| Precautions Note | This product is for research use only and is not intended for therapeutic or diagnostic applications. |

Background

RAT IgG Antibody, Peroxidase Conjugated, is specific for the heavy and light chains of all subclasses of Rat immunoglobulin G. Rat immunoglobulin G can be categorized into 4 IgG sub classes: IgG1, IgG2a, IgG2b, IgG2c.

Images



Western Blot of Anti-Rat IgG (H&L) (CHICKEN) Antibody (p/n 612-9102). Lane M: 3 μ l Molecular Ladder. Lane 1: Rat IgG whole molecule (p/n 012-0102). Lane 2: Rat IgG F(c) Fragment (p/n 012-0103). Lane 3: Rat IgG F(ab) Fragment (p/n 012-0105). Lane 4: Rat IgM Whole Molecule (p/n 012-0107). Lane 5: Rat Serum (p/n D310-05). All samples were reduced. Load: 50 ng per lane. Block: MB-070 for 30 min at RT. Primary Antibody: Anti-Rat IgG (H&L) (CHICKEN) Antibody (p/n 612-9102) 1:1,000 for 60 min at RT. Secondary Antibody: Anti-Chicken IgG (GOAT) Peroxidase Conjugated Antibody (p/n 603-103-126) 1:40,000 in MB-070 for 30 min at RT. Predicted/Observed Size: 25 and 55 kDa for Rat IgG and Serum, 25 kDa for F(c) and F(ab), 78 and 25 kDa for IgM. Rat F(c) migrates slightly higher.

Please note: All products are 'FOR RESEARCH USE ONLY. NOT FOR USE IN DIAGNOSTIC OR THERAPEUTIC PROCEDURES'.