

Anti-Human IgA (alpha chain) (Alkaline Phosphatase Conjugated) Secondary Antibody

Goat Polyclonal, Alkaline Phosphatase (Calf Intestine)

Catalog # ASR2468

Product Information

| | |
|-----------------------|---|
| Description | Anti-HUMAN IgA (alpha chain) (GOAT) Antibody Alkaline Phosphatase Conjugated |
| Host | Goat |
| Conjugate | Alkaline Phosphatase (Calf Intestine) |
| Target Species | Human |
| Clonality | Polyclonal |
| Application | DB |
| Physical State | Liquid (sterile filtered) |
| Host Isotype | IgG |
| Target Isotype | IgA |
| Buffer | 0.05 M Tris Chloride, 0.15M Sodium Chloride, 0.001M Magnesium Chloride, 0.0001M Zinc Chloride, 50% (v/v) Glycerol; pH 8.0 |
| Immunogen | Human IgA alpha heavy chain |
| Stabilizer | 10 mg/mL Bovine Serum Albumin (BSA) - Immunoglobulin and Protease free |
| Preservative | 0.01% (w/v) Sodium Azide |

Additional Information

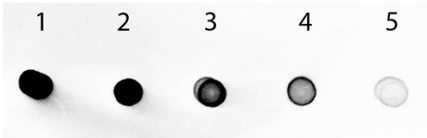
| | |
|---------------------------|---|
| Shipping Condition | Wet Ice |
| Application Note | This product has been assayed against 1.0 ug of Human IgA in a standard capture ELISA using pNPP p-nitrophenyl phosphate code # NPP-10 as a substrate for 30 minutes at room temperature. A working dilution of 1:1,500 to 1:7,000 is suggested for this product. This product has been assayed against 1.0 ug of Human IgA in a standard capture ELISA using pNPP p-nitrophenyl phosphate code # NPP-10 as a substrate for 30 minutes at room temperature. A working dilution of 1:1,500 to 1:7,000 is suggested for this product. |
| Purity | This product was prepared from monospecific antiserum by immunoaffinity chromatography using Human IgM coupled to agarose beads followed by solid phase adsorption(s) to remove any unwanted reactivities. Assay by immunoelectrophoresis resulted in a single precipitin arc against anti-Alkaline Phosphatase (calf intestine), anti-Goat Serum, Human IgA and Human Serum. No reaction was observed against Human IgG F(c). Specificity was confirmed by ELISA minimal cross reactivity against other human heavy or light chain isotypes. |
| Storage Condition | Store vial at 4° C before opening. DO NOT FREEZE. This product is stable at 4° C as an undiluted liquid. Dilute only prior to immediate use. Freezing alkaline phosphatase conjugates will result in a substantial loss of enzymatic |

activity.

Precautions Note

This product is for research use only and is not intended for therapeutic or diagnostic applications.

Images



Dot Blot of Human IgA Antibody Alkaline Phosphatase Conjugated. Antigen: Human IgA. Load: Lane 1 - 100ng Lane 2 - 33.33ng Lane 3 - 11.11ng Lane 4 - 3.70ng Lane 5 - 1.23ng. Primary antibody: n/a Secondary antibody: Human IgA Antibody Alkaline Phosphatase Conjugated at 1:1,000 for 60 min at RT. Block: MB-070 for 60 min at RT. Visualized using Alkaline Phosphatase Substrate.

Please note: All products are 'FOR RESEARCH USE ONLY. NOT FOR USE IN DIAGNOSTIC OR THERAPEUTIC PROCEDURES'.