

# Anti-Human IgG F(c) Secondary Antibody

Rabbit Polyclonal, Unconjugated

Catalog # ASR2342

## Product Information

---

<b>Description</b>	Anti-HUMAN IgG F(c) (RABBIT) Antibody
<b>Host</b>	Rabbit
<b>Conjugate</b>	Unconjugated
<b>Target Species</b>	Human
<b>Reactivity</b>	Human
<b>Clonality</b>	Polyclonal
<b>Application</b>	WB
<b>Physical State</b>	Liquid (sterile filtered)
<b>Host Isotype</b>	IgG
<b>Target Isotype</b>	IgG F(c)
<b>Buffer</b>	0.02 M Potassium Phosphate, 0.15 M Sodium Chloride, pH 7.2
<b>Immunogen</b>	Anti-Human IgG F(c) fragment was produced by repeated immunization with Human IgG F(c) fragment in rabbit.
<b>Stabilizer</b>	None
<b>Preservative</b>	0.01% (w/v) Sodium Azide

## Additional Information

---

<b>Shipping Condition</b>	Wet Ice
<b>Application Note</b>	Anti-Human IgG F(c) fragment is suitable for use in immunoelectrophoresis, western-blot, competitive western-blot, ELISA and competitive ELISA assays. Specific conditions for reactivity and signal detection should be optimized by the end user.
<b>Purity</b>	This product was prepared from monospecific antiserum by immunoaffinity chromatography using Human IgG coupled to agarose beads followed by solid phase adsorption(s) to remove any unwanted reactivities. Assay by immunoelectrophoresis resulted in a single precipitin arc against anti-Rabbit Serum, Human IgG, Human IgG F(c) and Human Serum. No reaction was observed against Human IgG F(ab') <sub>2</sub> .
<b>Storage Condition</b>	Store vial at 4° C prior to opening. This product is stable for several weeks at 4° C as an undiluted liquid. Dilute only prior to immediate use. For extended storage aliquot contents and freeze at -20° C or below. Avoid cycles of freezing and thawing.
<b>Precautions Note</b>	This product is for research use only and is not intended for therapeutic or diagnostic applications.

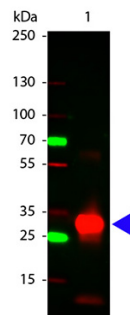
## Background

---

Anti-Human IgG F(c) fragment antibody generated in rabbit detects specifically Human IgG F(c) fragment. This secondary antibody anti-Human is ideal for investigators who routinely perform ELISA, Sandwich ELISA, titration assays, western-blot, immunoprecipitation and more generally immunoassays.

## Images

---



Western Blot of Rabbit anti-Human Fc antibody. Lane 1: Human Fc. Lane 2: none. Load: 100 ng per lane. Primary antibody: Human Fc antibody at 1:1,000 for overnight at 4°C. Secondary antibody: DyLight™ 649 rabbit secondary antibody at 1:20,000 for 30 min at RT. Block: MB-070 for 30 min at RT. Predicted/Observed size: 28 kDa, 28 kDa for Human Fc. Other band(s): Human Fc splice variants and isoforms.

Please note: All products are 'FOR RESEARCH USE ONLY. NOT FOR USE IN DIAGNOSTIC OR THERAPEUTIC PROCEDURES'.