

Goat Anti-Rabbit IgG (H&L) HRP

Catalog # ASP1615

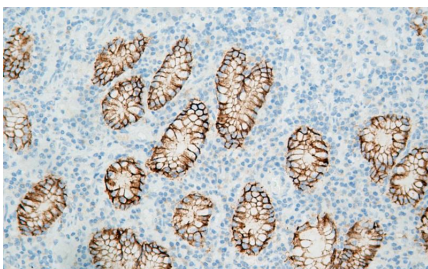
Product Information

Application WB, IHC-P, IC, E
Reactivity Rabbit

Additional Information

Source Goat
Immunogen Rabbit IgG
Purification The antibody was isolated from ascitic by immunoaffinity chromatography using antigens coupled to agarose beads.
Target/Specificity By immunoelectrophoresis and ELISA this antibody reacts specifically with Rabbit IgG. No antibody was detected against non immunoglobulin serum proteins.
Clonality Polyclonal
Conjugate HRP
Format Liquid in 0.01M Phosphate Buffered Saline, pH 7.2, containing 1% BSA, 50% glycerol, 0.05% Sodium Azide
Dilution E (1/5000 - 1/20000), WB (1/5000 - 1/20000), IHC-P (1/100 - 1/500), IC (1/100 - 1/500)
Storage Shipped at 4°C. Upon delivery aliquot and store at -20°C for one year. Avoid freeze/thaw cycles.

Images



Immunohistochemical analysis of paraffin-embedded Human stomach cancer section using claudin18.2 antibody. ASP1615 was used as the secondary at dilution 1:250, followed by DAB staining.

Please note: All products are 'FOR RESEARCH USE ONLY. NOT FOR USE IN DIAGNOSTIC OR THERAPEUTIC PROCEDURES'.