

Anti-TM4SF1 Reference Antibody (Beth Israel Patent Anti-TM4SF1)

Recombinant Antibody
Catalog # APR11048

Product Information

Application	FC, Kinetics, Animal Model
Primary Accession	P30408
Reactivity	Human
Clonality	Monoclonal
Isotype	IgG1
Calculated MW	21632

Additional Information

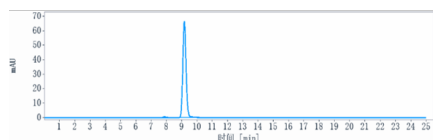
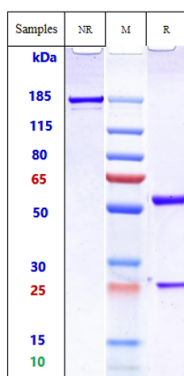
Target/Specificity	TM4SF1
Endotoxin Conjugation	Unconjugated
Expression system	CHO Cell
Format	Purified monoclonal antibody supplied in PBS, pH6.0, without preservative. This antibody is purified through a protein A column.

Protein Information

Name	TM4SF1
Synonyms	M3S1, TAAL6
Cellular Location	Membrane; Multi-pass membrane protein. Note=Colocalizes with SDCBP2 in the apical region of the cell (PubMed:11102519).
Tissue Location	Highly expressed in lung, breast, colon and ovarian carcinomas. It is also present on some normal cells, endothelial cells in particular

Images

Anti-TM4SF1 Reference Antibody (Beth Israel Patent Anti-TM4SF1) on SDS-PAGE under reducing (R) condition. The gel was stained with Coomassie Blue. The purity of the protein is greater than 90%



The purity of Anti-TM4SF1 Reference Antibody (Beth Israel Patent Anti-TM4SF1) is more than 95% ,determined by SEC-HPLC.

Please note: All products are 'FOR RESEARCH USE ONLY. NOT FOR USE IN DIAGNOSTIC OR THERAPEUTIC PROCEDURES'.