

Anti-SCN11a / Nav1.9 Reference Antibody (Wuhan U. patent anti-Nav1.9)

Recombinant Antibody
Catalog # APR11028

Product Information

Application	FC, Kinetics, Animal Model
Primary Accession	Q9UI33
Reactivity	Human, Mouse
Clonality	Monoclonal
Isotype	IgG1
Calculated MW	204922

Additional Information

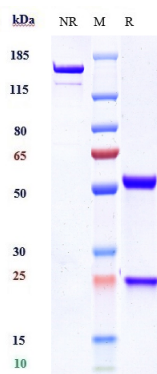
Target/Specificity	SCN11a / Nav1.9
Endotoxin Conjugation	Unconjugated
Expression system	CHO Cell
Format	Purified monoclonal antibody supplied in PBS, pH6.0, without preservative. This antibody is purified through a protein A column.

Protein Information

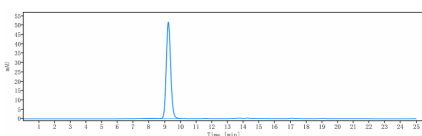
Name	SCN11A (HGNC:10583)
Function	Sodium channel mediating the voltage-dependent sodium ion permeability of excitable membranes. Assuming opened or closed conformations in response to the voltage difference across the membrane, the protein forms a sodium-selective channel through which sodium ions may pass in accordance with their electrochemical gradient (PubMed: 10580103 , PubMed: 12384689 , PubMed: 24036948 , PubMed: 24776970 , PubMed: 25791876 , PubMed: 26645915). Involved in membrane depolarization during action potential in nociceptors which function as key relay stations for the electrical transmission of pain signals from the periphery to the central nervous system (PubMed: 24036948 , PubMed: 24776970 , PubMed: 25791876 , PubMed: 26645915). Also involved in rapid BDNF-evoked neuronal depolarization (PubMed: 12384689).
Cellular Location	Cell membrane; Multi-pass membrane protein
Tissue Location	Expressed in the dorsal root ganglia and trigeminal ganglia, olfactory bulb, hippocampus, cerebellar cortex, spinal cord, spleen, small intestine and

placenta.

Images



Anti-SCN11a / Nav1.9 Reference Antibody (Wuhan U. patent anti-Nav1.9) on SDS-PAGE under reducing (R) condition. The gel was stained with Coomassie Blue. The purity of the protein is greater than 90%



The purity of Anti-SCN11a / Nav1.9 Reference Antibody (Wuhan U. patent anti-Nav1.9) is more than 95% ,determined by SEC-HPLC.

Please note: All products are 'FOR RESEARCH USE ONLY. NOT FOR USE IN DIAGNOSTIC OR THERAPEUTIC PROCEDURES'.