

# Anti-Meflin Reference Antibody (Tokai U. Patent Anti-Meflin)

Recombinant Antibody  
Catalog # APR10976

## Product Information

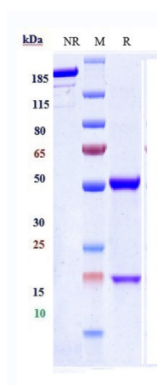
<b>Application</b>	FC, Kinetics, Animal Model
<b>Primary Accession</b>	<a href="#">A0A146E5L3</a>
<b>Reactivity</b>	Human
<b>Clonality</b>	Monoclonal
<b>Isotype</b>	IgG1
<b>Calculated MW</b>	150 KDa

## Additional Information

<b>Target/Specificity</b>	Meflin
<b>Endotoxin Conjugation</b>	Unconjugated
<b>Expression system</b>	CHO Cell
<b>Format</b>	Purified monoclonal antibody supplied in PBS, pH6.0, without preservative. This antibody is purified through a protein A column.

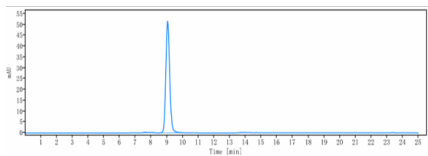
## Protein Information

## Images



Anti-Meflin Reference Antibody (Tokai U. Patent Anti-Meflin) on SDS-PAGE under reducing (R) condition. The gel was stained with Coomassie Blue. The purity of the protein is greater than 90%

The purity of Anti-Meflin Reference Antibody (Tokai U.



Patent Anti-Meflin) is more than 95% ,determined by SEC-HPLC.

Please note: All products are 'FOR RESEARCH USE ONLY. NOT FOR USE IN DIAGNOSTIC OR THERAPEUTIC PROCEDURES'.