

Anti-Klotho Beta Reference Antibody (RG7992)

Recombinant Antibody
Catalog # APR10970

Product Information

Application	FC, Kinetics, Animal Model
Primary Accession	Q86Z14
Reactivity	Human, Mouse, Rat, Rabbit
Clonality	Monoclonal
Isotype	IgG1
Calculated MW	119808

Additional Information

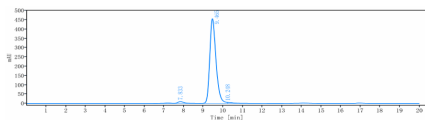
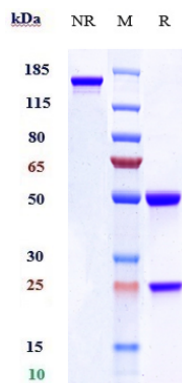
Target/Specificity	Klotho Beta
Endotoxin Conjugation	Unconjugated
Expression system	CHO Cell
Format	Purified monoclonal antibody supplied in PBS, pH6.0, without preservative. This antibody is purified through a protein A column.

Protein Information

Name	KLB
Function	Contributes to the transcriptional repression of cholesterol 7-alpha-hydroxylase (CYP7A1), the rate-limiting enzyme in bile acid synthesis. Probably inactive as a glycosidase. Increases the ability of FGFR1 and FGFR4 to bind FGF21 (By similarity).
Cellular Location	Cell membrane; Single-pass type III membrane protein

Images

Anti-Klotho Beta Reference Antibody (RG7992) on SDS-PAGE under reducing (R) condition. The gel was stained with Coomassie Blue. The purity of the protein is greater than 95%



The purity of Anti-Klotho Beta Reference Antibody (RG7992) is more than 95.82% ,determined by SEC-HPLC.

Please note: All products are 'FOR RESEARCH USE ONLY. NOT FOR USE IN DIAGNOSTIC OR THERAPEUTIC PROCEDURES'.