

# Anti-KAAG1 Reference Antibody (ADCT-901-MMAE)

Recombinant Antibody  
Catalog # APR10965

## Product Information

---

|                          |                            |
|--------------------------|----------------------------|
| <b>Application</b>       | FC, Kinetics, Animal Model |
| <b>Primary Accession</b> | <a href="#">Q9UBP8</a>     |
| <b>Reactivity</b>        | Human                      |
| <b>Clonality</b>         | Monoclonal                 |
| <b>Isotype</b>           | IgG1                       |
| <b>Calculated MW</b>     | 8969                       |

## Additional Information

---

|                                  |  |
|----------------------------------|--|
| <b>Target/Specificity</b>        | KAAG1  |
| <b>Endotoxin<br/>Conjugation</b> | Unconjugated   |
| <b>Expression system</b>         | CHO Cell   |
| <b>Format</b>                    | Purified monoclonal antibody supplied in PBS, pH6.0, without preservative. This antibody is purified through a protein A column. |

## Protein Information

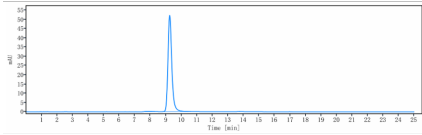
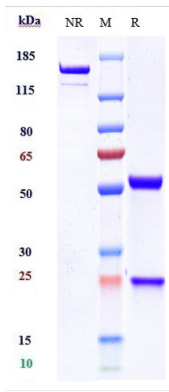
---

|                        |   |
|------------------------|---|
| <b>Name</b>            | KAAG1   |
| <b>Synonyms</b>        | RU2AS   |
| <b>Tissue Location</b> | Expressed in testis and kidney, and, at lower levels, in urinary bladder and liver. Expressed by a high proportion of tumors of various histologic origin, including melanomas, sarcomas and colorectal carcinomas. |

## Images

---

Anti-KAAG1 Reference Antibody (ADCT-901-MMAE) on SDS-PAGE under reducing (R) condition. The gel was stained with Coomassie Blue. The purity of the protein is greater than 90%



The purity of Anti-KAAG1 Reference Antibody (ADCT-901-MMAE) is more than 95% ,determined by SEC-HPLC.

Please note: All products are 'FOR RESEARCH USE ONLY. NOT FOR USE IN DIAGNOSTIC OR THERAPEUTIC PROCEDURES'.