

Anti-ETBR Reference Antibody (DEDN6526A)

Recombinant Antibody
Catalog # APR10904

Product Information

Application	FC, Kinetics, Animal Model
Primary Accession	P24530
Reactivity	Human
Clonality	Monoclonal
Isotype	IgG1
Calculated MW	49644

Additional Information

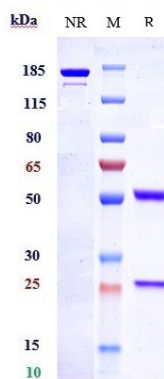
Target/Specificity	ETBR
Endotoxin Conjugation	Unconjugated
Expression system	CHO Cell
Format	Purified monoclonal antibody supplied in PBS, pH6.0, without preservative. This antibody is purified through a protein A column.

Protein Information

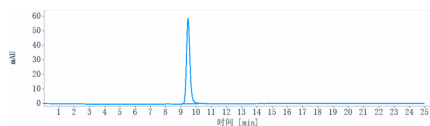
Name	EDNRB (HGNC:3180)
Synonyms	ETRB
Function	Non-specific receptor for endothelin 1, 2, and 3. Mediates its action by association with G proteins that activate a phosphatidylinositol-calcium second messenger system.
Cellular Location	Cell membrane; Multi-pass membrane protein. Note=internalized after activation by endothelins.
Tissue Location	Expressed in placental stem villi vessels, but not in cultured placental villi smooth muscle cells

Images

Anti-ETBR Reference Antibody (DEDN6526A) on SDS-PAGE under reducing (R) condition. The gel was stained with



Coomassie Blue. The purity of the protein is greater than 95%



The purity of Anti-ETBR Reference Antibody (DEDN6526A) is more than 99.05% ,determined by SEC-HPLC.

Please note: All products are 'FOR RESEARCH USE ONLY. NOT FOR USE IN DIAGNOSTIC OR THERAPEUTIC PROCEDURES'.