

Anti-Dysadherin Reference Antibody (Centrose patent anti-dysadherin)

Recombinant Antibody
Catalog # APR10886

Product Information

Application	FC, Kinetics, Animal Model
Primary Accession	Q96DB9
Reactivity	Human, Mouse
Clonality	Monoclonal
Isotype	IgG1
Calculated MW	19472

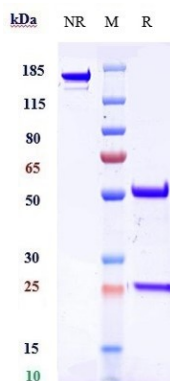
Additional Information

Target/Specificity	Dysadherin
Endotoxin Conjugation	Unconjugated
Expression system	CHO Cell
Format	Purified monoclonal antibody supplied in PBS, pH6.0, without preservative. This antibody is purified through a protein A column.

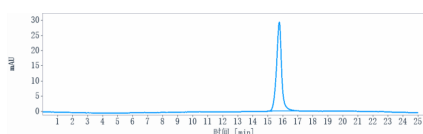
Protein Information

Name	FXYD5
Synonyms	DYSAD, IWU1
Function	Associates with and regulates the activity of the sodium/potassium-transporting ATPase (NKA) which catalyzes the hydrolysis of ATP coupled with the exchange of Na(+) and K(+) ions across the plasma membrane (By similarity). May increase NKA activity by increasing the apparent affinity for Na(+) (PubMed: 18263667). Involved in down-regulation of E-cadherin which results in reduced cell adhesion. Promotes metastasis (PubMed: 11756660).
Cellular Location	Cell membrane; Single-pass type I membrane protein {ECO:0000250 UniProtKB:P97808} Basolateral cell membrane {ECO:0000250 UniProtKB:P97808}; Single-pass type I membrane protein {ECO:0000250 UniProtKB:P97808}. Note=In kidneys localizes to the basolateral membrane of the connecting tubule {ECO:0000250 UniProtKB:P97808}

Images



Anti-Dysadherin Reference Antibody (Centrose patent anti-dysadherin) on SDS-PAGE under reducing (R) condition. The gel was stained with Coomassie Blue. The purity of the protein is greater than 90%



The purity of Anti-Dysadherin Reference Antibody (Centrose patent anti-dysadherin) is more than 95%, determined by SEC-HPLC.

Please note: All products are 'FOR RESEARCH USE ONLY. NOT FOR USE IN DIAGNOSTIC OR THERAPEUTIC PROCEDURES'.