

Anti-CTLA-4 / CD152 Reference Antibody (zalifrelimab)

Recombinant Antibody
Catalog # APR10860

Product Information

Application	FC, Kinetics, Animal Model
Primary Accession	P16410
Reactivity	Human
Clonality	Monoclonal
Isotype	IgG1
Calculated MW	24656

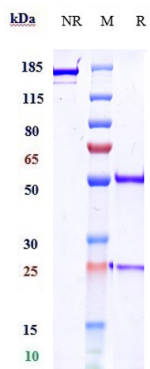
Additional Information

Target/Specificity	CTLA-4 / CD152
Endotoxin Conjugation	Unconjugated
Expression system	CHO Cell
Format	Purified monoclonal antibody supplied in PBS, pH6.0, without preservative. This antibody is purified through a protein A column.

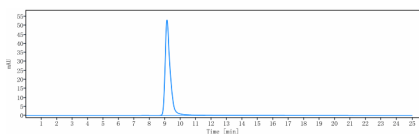
Protein Information

Name	CTLA4
Synonyms	CD152
Function	Inhibitory receptor acting as a major negative regulator of T-cell responses (PubMed: 11279501 , PubMed: 11279502 , PubMed: 16551244 , PubMed: 1714933 , PubMed: 18641304 , PubMed: 28484017). Acts as a decoy receptor: the affinity of CTLA4 for its natural B7 family ligands, CD80 and CD86, is considerably stronger than the affinity of their cognate stimulatory coreceptor CD28 (PubMed: 11279501 , PubMed: 11279502 , PubMed: 16551244 , PubMed: 1714933 , PubMed: 28484017).
Cellular Location	Cell membrane; Single-pass type I membrane protein. Note=Exists primarily an intracellular antigen whose surface expression is tightly regulated by restricted trafficking to the cell surface and rapid internalization
Tissue Location	Widely expressed with highest levels in lymphoid tissues. Detected in activated T-cells where expression levels are 30- to 50-fold less than CD28, the stimulatory coreceptor, on the cell surface following activation.

Images



Anti-CTLA-4 / CD152 Reference Antibody (zalifrelimab) on SDS-PAGE under reducing (R) condition. The gel was stained with Coomassie Blue. The purity of the protein is greater than 95%



The purity of Anti-CTLA-4 / CD152 Reference Antibody (zalifrelimab) is more than 95% ,determined by SEC-HPLC.

Please note: All products are 'FOR RESEARCH USE ONLY. NOT FOR USE IN DIAGNOSTIC OR THERAPEUTIC PROCEDURES'.