

Anti-CRTAM / CD355 Reference Antibody (Oxford Bio patent anti-CRTAM)

Recombinant Antibody
Catalog # APR10849

Product Information

Application	FC, Kinetics, Animal Model
Primary Accession	O95727
Clonality	Monoclonal
Isotype	IgG1
Calculated MW	44641

Additional Information

Target/Specificity	CRTAM / CD355
Endotoxin Conjugation	Unconjugated
Expression system	CHO Cell
Format	Purified monoclonal antibody supplied in PBS, pH6.0, without preservative. This antibody is purified through a protein A column.

Protein Information

Name	CRTAM {ECO:0000312 EMBL:AAC80267.1}
Function	Mediates heterophilic cell-cell adhesion which regulates the activation, differentiation and tissue retention of various T-cell subsets (By similarity). Interaction with CADM1 promotes natural killer (NK) cell cytotoxicity and IFNG/interferon-gamma secretion by CD8+ T- cells in vitro as well as NK cell-mediated rejection of tumors expressing CADM1 in vivo (PubMed: 15811952). Regulates CD8+ T-cell proliferation in response to T-cell receptor (TCR) activation (By similarity). Appears to be dispensable for CD8+ T-cell-mediated cytotoxicity (By similarity). Interaction with SCRIB promotes the late phase of cellular polarization of a subset of CD4+ T-cells, which in turn regulates TCR-mediated proliferation and IFNG, IL17 and IL22 production (By similarity). By interacting with CADM1 on CD8+ dendritic cells, regulates the retention of activated CD8+ T-cells within the draining lymph node (By similarity). Required for the intestinal retention of intraepithelial CD4+ CD8+ T-cells and, to a lesser extent, intraepithelial and lamina propria CD8+ T-cells and CD4+ T-cells (By similarity). Interaction with CADM1 promotes the adhesion to gut- associated CD103+ dendritic cells, which may facilitate the expression of gut-homing and adhesion molecules on T-cells and the conversion of CD4+ T-cells into CD4+ CD8+ T-cells (By similarity).

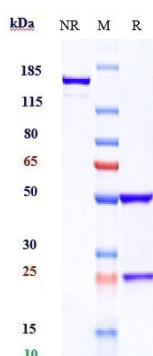
Cellular Location

Cell membrane {ECO:0000250|UniProtKB:Q149L7}; Single-pass type I membrane protein. Note=In a subset of CD4+ T-cells, colocalizes with SCRIB at the immunological synapse during the late phase of T-cell activation {ECO:0000250|UniProtKB:Q149L7}

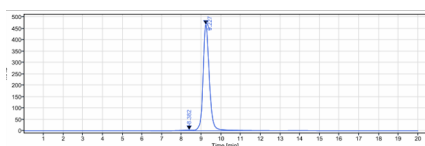
Tissue Location

In the immune system, expression is restricted to activated class-I MHC-restricted cells, including NKT and CD8 T-cells (PubMed:10811014, PubMed:15811952, PubMed:16300832). Strongly expressed in spleen, thymus, small intestine, peripheral blood leukocyte, and in Purkinje neurons in cerebellum. Expressed at much lower levels in testis, ovary, colon, lung and lymphoid tissues (PubMed:16300832)

Images



Anti-CRTAM / CD355 Reference Antibody (Oxford Bio patent anti-CRTAM) on SDS-PAGE under reducing (R) condition. The gel was stained with Coomassie Blue. The purity of the protein is greater than 90%



The purity of Anti-CRTAM / CD355 Reference Antibody (Oxford Bio patent anti-CRTAM) is more than 95% ,determined by SEC-HPLC.

Please note: All products are 'FOR RESEARCH USE ONLY. NOT FOR USE IN DIAGNOSTIC OR THERAPEUTIC PROCEDURES'.