

# Anti-Clusterin Reference Antibody (AB-16B5)

Recombinant Antibody  
Catalog # APR10839

## Product Information

---

<b>Application</b>	FC, Kinetics, Animal Model
<b>Primary Accession</b>	<a href="#">Q96AJ1</a>
<b>Reactivity</b>	Human
<b>Clonality</b>	Monoclonal
<b>Isotype</b>	IgG2SA
<b>Calculated MW</b>	48125

## Additional Information

---

<b>Target/Specificity</b>	Clusterin
<b>Endotoxin Conjugation</b>	Unconjugated
<b>Expression system</b>	CHO Cell
<b>Format</b>	Purified monoclonal antibody supplied in PBS, pH6.0, without preservative. This antibody is purified through a protein A column.

## Protein Information

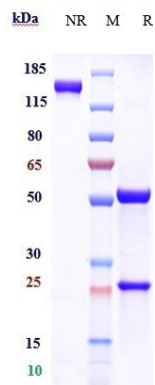
---

<b>Name</b>	CLUAP1
<b>Synonyms</b>	KIAA0643
<b>Function</b>	Required for cilia biogenesis. Appears to function within the multiple intraflagellar transport complex B (IFT-B). Key regulator of hedgehog signaling.
<b>Cellular Location</b>	Cell projection, cilium. Nucleus
<b>Tissue Location</b>	Expressed in testis, thyroid and trachea and to a lower extent in spinal cord and adrenal gland. Highly expressed in colon cancer and osteosarcoma cell lines.

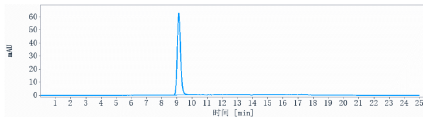
## Images

---

Anti-Clusterin Reference Antibody (AB-16B5) on SDS-PAGE under reducing (R) condition. The gel was stained with



Coomassie Blue. The purity of the protein is greater than 95%



The purity of Anti-Clusterin Reference Antibody (AB-16B5) is more than 95% ,determined by SEC-HPLC.

Please note: All products are 'FOR RESEARCH USE ONLY. NOT FOR USE IN DIAGNOSTIC OR THERAPEUTIC PROCEDURES'.