

# Anti-CLEC14A Reference Antibody (Scripps Korea patent anti-CLEC14A)

Recombinant Antibody  
Catalog # APR10836

## Product Information

---

<b>Application</b>	FC, Kinetics, Animal Model
<b>Primary Accession</b>	<a href="#">Q86T13</a>
<b>Reactivity</b>	Human, Mouse, Rat
<b>Clonality</b>	Monoclonal
<b>Isotype</b>	IgG1
<b>Calculated MW</b>	51636

## Additional Information

---

<b>Target/Specificity</b>	CLEC14A
<b>Endotoxin Conjugation</b>	Unconjugated
<b>Expression system</b>	CHO Cell
<b>Format</b>	Purified monoclonal antibody supplied in PBS, pH6.0, without preservative. This antibody is purified through a protein A column.

## Protein Information

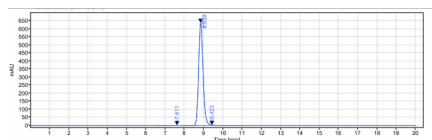
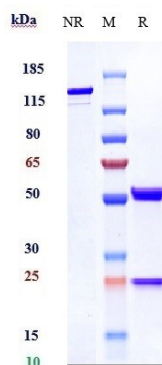
---

<b>Name</b>	CLEC14A
<b>Synonyms</b>	C14orf27, EGFR5
<b>Cellular Location</b>	Membrane; Single-pass type I membrane protein

## Images

---

Anti-CLEC14A Reference Antibody (Scripps Korea patent anti-CLEC14A) on SDS-PAGE under reducing (R) condition. The gel was stained with Coomassie Blue. The purity of the protein is greater than 90%



The purity of Anti-CLEC14A Reference Antibody (Scripps Korea patent anti-CLEC14A) is more than 95% ,determined by SEC-HPLC.

Please note: All products are 'FOR RESEARCH USE ONLY. NOT FOR USE IN DIAGNOSTIC OR THERAPEUTIC PROCEDURES'.