

Anti-CLDN6 Reference Antibody (AE3-20)

Recombinant Antibody

Catalog # APR10833

Product Information

| | |
|--------------------------|----------------------------|
| Application | FC, Kinetics, Animal Model |
| Primary Accession | P56747 |
| Reactivity | Human |
| Clonality | Monoclonal |
| Isotype | IgG |
| Calculated MW | 23292 |

Additional Information

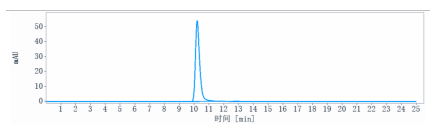
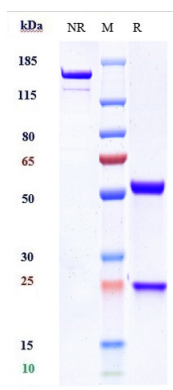
| | |
|----------------------------------|--|
| Target/Specificity | CLDN6 |
| Endotoxin Conjugation | Unconjugated |
| Expression system | CHO Cell |
| Format | Purified monoclonal antibody supplied in PBS, pH6.0, without preservative. This antibody is purified through a protein A column. |

Protein Information

| | |
|--------------------------|--|
| Name | CLDN6 |
| Function | Plays a major role in tight junction-specific obliteration of the intercellular space. |
| Cellular Location | Cell junction, tight junction {ECO:0000250 UniProtKB:Q9Z262}. Cell membrane; Multi-pass membrane protein |
| Tissue Location | Expressed in the liver, in peripheral blood mononuclear cells and hepatocarcinoma cell lines |

Images

Anti-CLDN6 Reference Antibody (AE3-20) on SDS-PAGE under reducing (R) condition. The gel was stained with Coomassie Blue. The purity of the protein is greater than 90%



The purity of Anti-CLDN6 Reference Antibody (AE3-20) is more than 95% ,determined by SEC-HPLC.

Please note: All products are 'FOR RESEARCH USE ONLY. NOT FOR USE IN DIAGNOSTIC OR THERAPEUTIC PROCEDURES'.