

Anti-CHI3L1 Reference Antibody (Brown U. patent anti-CHI3L1)

Recombinant Antibody
Catalog # APR10830

Product Information

Application	FC, Kinetics, Animal Model
Primary Accession	P36222
Reactivity	Human
Clonality	Monoclonal
Isotype	IgG1
Calculated MW	42625

Additional Information

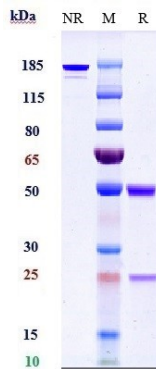
Target/Specificity	CHI3L1
Endotoxin Conjugation	Unconjugated
Expression system	CHO Cell
Format	Purified monoclonal antibody supplied in PBS, pH6.0, without preservative. This antibody is purified through a protein A column.

Protein Information

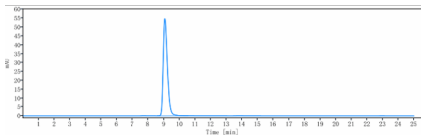
Name	CHI3L1
Function	Carbohydrate-binding lectin with a preference for chitin. Has no chitinase activity. May play a role in tissue remodeling and in the capacity of cells to respond to and cope with changes in their environment. Plays a role in T-helper cell type 2 (Th2) inflammatory response and IL-13-induced inflammation, regulating allergen sensitization, inflammatory cell apoptosis, dendritic cell accumulation and M2 macrophage differentiation. Facilitates invasion of pathogenic enteric bacteria into colonic mucosa and lymphoid organs. Mediates activation of AKT1 signaling pathway and subsequent IL8 production in colonic epithelial cells. Regulates antibacterial responses in lung by contributing to macrophage bacterial killing, controlling bacterial dissemination and augmenting host tolerance. Also regulates hyperoxia-induced injury, inflammation and epithelial apoptosis in lung.
Cellular Location	Secreted, extracellular space. Cytoplasm. Cytoplasm, perinuclear region. Endoplasmic reticulum
Tissue Location	Present in activated macrophages, articular chondrocytes, synovial cells as

well as in liver. Very low or undetectable expression in non-inflammatory colon. Undetectable in muscle tissues, lung, pancreas, mononuclear cells, or fibroblasts

Images



Anti-CHI3L1 Reference Antibody (Brown U. patent anti-CHI3L1) on SDS-PAGE under reducing (R) condition. The gel was stained with Coomassie Blue. The purity of the protein is greater than 90%



The purity of Anti-CHI3L1 Reference Antibody (Brown U. patent anti-CHI3L1) is more than 95% ,determined by SEC-HPLC.

Please note: All products are 'FOR RESEARCH USE ONLY. NOT FOR USE IN DIAGNOSTIC OR THERAPEUTIC PROCEDURES'.