

# Anti-AMHR2 Reference Antibody (murlentamab-MMAE)

Recombinant Antibody

Catalog # APR10770

## Product Information

---

<b>Application</b>	FC, Kinetics, Animal Model
<b>Primary Accession</b>	<a href="#">Q16671</a>
<b>Reactivity</b>	Human
<b>Clonality</b>	Monoclonal
<b>Isotype</b>	IgG1
<b>Calculated MW</b>	62750

## Additional Information

---

<b>Target/Specificity</b>	AMHR2
<b>Endotoxin Conjugation</b>	MMAE
<b>Expression system</b>	CHO Cell
<b>Format</b>	Purified monoclonal antibody supplied in PBS, pH6.0, without preservative. This antibody is purified through a protein A column.

## Protein Information

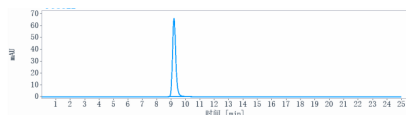
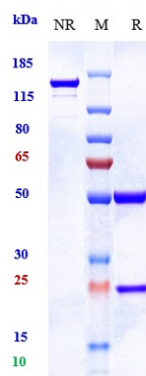
---

<b>Name</b>	AMHR2
<b>Synonyms</b>	AMHR, MISR2
<b>Function</b>	On ligand binding, forms a receptor complex consisting of two type II and two type I transmembrane serine/threonine kinases. Type II receptors phosphorylate and activate type I receptors which autophosphorylate, then bind and activate SMAD transcriptional regulators. Receptor for anti-Muellerian hormone.
<b>Cellular Location</b>	Membrane; Single-pass type I membrane protein.

## Images

---

Anti-AMHR2 Reference Antibody (murlentamab-MMAE) on SDS-PAGE under reducing (R) condition. The gel was stained with Coomassie Blue. The purity of the protein is greater than 90%



The purity of Anti-AMHR2 Reference Antibody (murlentamab-MMAE) is more than 95% ,determined by SEC-HPLC.

Please note: All products are 'FOR RESEARCH USE ONLY. NOT FOR USE IN DIAGNOSTIC OR THERAPEUTIC PROCEDURES'.