

Anti-CALCA / CGRP Reference Antibody (fremanezumab)

Recombinant Antibody

Catalog # APR10725

Product Information

Application	FC, Kinetics, Animal Model
Primary Accession	P06881
Reactivity	Human
Clonality	Monoclonal
Isotype	IgG2SA
Calculated MW	13899

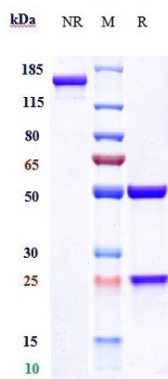
Additional Information

Target/Specificity	CALCA / CGRP
Endotoxin Conjugation	Unconjugated
Expression system	CHO Cell
Format	Purified monoclonal antibody supplied in PBS, pH6.0, without preservative. This antibody is purified through a protein A column.

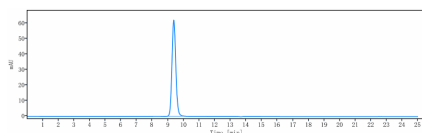
Protein Information

Name	CALCA (HGNC:1437)
Synonyms	CALC1
Function	CGRP1/CALCA is a peptide hormone that induces vasodilation mediated by the CALCRL-RAMP1 receptor complex (PubMed: 1318039 , PubMed: 33602864 , PubMed: 9620797). Dilates a variety of vessels including the coronary, cerebral and systemic vasculature. Its abundance in the CNS also points toward a neurotransmitter or neuromodulator role (PubMed: 3492492). It also elevates platelet cAMP (PubMed: 1318039). CGRP1 can also bind and activate CALCR-RAMP1 (AMYR1) receptor complex (PubMed: 38603770).
Cellular Location	Secreted.
Tissue Location	Expressed in spinal cord.

Images



Anti-CALCA / CGRP Reference Antibody (fremanezumab) on SDS-PAGE under reducing (R) condition. The gel was stained with Coomassie Blue. The purity of the protein is greater than 95%



The purity of Anti-CALCA / CGRP Reference Antibody (fremanezumab) is more than 100% ,determined by SEC-HPLC.

Please note: All products are 'FOR RESEARCH USE ONLY. NOT FOR USE IN DIAGNOSTIC OR THERAPEUTIC PROCEDURES'.