

# Anti-CXCL8 / IL-8 Reference Antibody (ABX-IL8)

Recombinant Antibody  
Catalog # APR10687

## Product Information

---

<b>Application</b>	FC, Kinetics, Animal Model
<b>Primary Accession</b>	<a href="#">P10145</a>
<b>Reactivity</b>	Human
<b>Clonality</b>	Monoclonal
<b>Isotype</b>	IgG2SA
<b>Calculated MW</b>	11098

## Additional Information

---

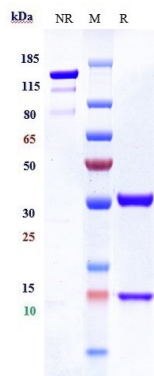
<b>Target/Specificity</b>	CXCL8 / IL-8
<b>Endotoxin Conjugation</b>	Unconjugated
<b>Expression system</b>	CHO Cell
<b>Format</b>	Purified monoclonal antibody supplied in PBS, pH6.0, without preservative. This antibody is purified through a protein A column.

## Protein Information

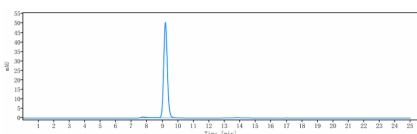
---

<b>Name</b>	CXCL8
<b>Synonyms</b>	IL8
<b>Function</b>	Chemotactic factor that mediates inflammatory response by attracting neutrophils, basophils, and T-cells to clear pathogens and protect the host from infection (PubMed: <a href="#">18692776</a> , PubMed: <a href="#">7636208</a> ). Also plays an important role in neutrophil activation (PubMed: <a href="#">2145175</a> , PubMed: <a href="#">9623510</a> ). Released in response to an inflammatory stimulus, exerts its effect by binding to the G-protein-coupled receptors CXCR1 and CXCR2, primarily found in neutrophils, monocytes and endothelial cells (PubMed: <a href="#">1840701</a> , PubMed: <a href="#">1891716</a> ). G-protein heterotrimer (alpha, beta, gamma subunits) constitutively binds to CXCR1/CXCR2 receptor and activation by IL8 leads to beta and gamma subunits release from G $\alpha$ (GNAI2 in neutrophils) and activation of several downstream signaling pathways including PI3K and MAPK pathways (PubMed: <a href="#">11971003</a> , PubMed: <a href="#">8662698</a> ).
<b>Cellular Location</b>	Secreted.

## Images



Anti-CXCL8 / IL-8 Reference Antibody (ABX-IL8) on SDS-PAGE under reducing (R) condition. The gel was stained with Coomassie Blue. The purity of the protein is greater than 95%



The purity of Anti-CXCL8 / IL-8 Reference Antibody (ABX-IL8) is more than 98.07% ,determined by SEC-HPLC.

Please note: All products are 'FOR RESEARCH USE ONLY. NOT FOR USE IN DIAGNOSTIC OR THERAPEUTIC PROCEDURES'.