

Anti-Phosphorylcholine Reference Antibody (ATH3G10)

Recombinant Antibody

Catalog # APR10665

Product Information

Application	FC, Kinetics, Animal Model
Primary Accession	Q9Y5K3
Reactivity	Human
Clonality	Monoclonal
Isotype	IgG1
Calculated MW	41940

Additional Information

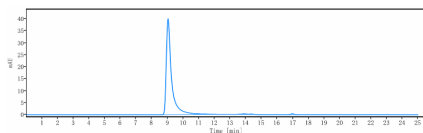
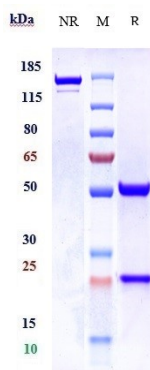
Target/Specificity	Phosphorylcholine
Endotoxin	
Conjugation	Unconjugated
Expression system	CHO Cell
Format	Purified monoclonal antibody supplied in PBS, pH6.0, without preservative. This antibody is purified through a protein A column.

Protein Information

Name	PCYT1B
Synonyms	CCTB
Function	[Isoform 1]: Catalyzes the key rate-limiting step in the CDP- choline pathway for phosphatidylcholine biosynthesis.
Cellular Location	[Isoform 1]: Cytoplasm. Endoplasmic reticulum
Tissue Location	[Isoform 1]: Highly expressed in testis, placenta, brain, ovary, liver and fetal lung.

Images

Anti-Phosphorylcholine Reference Antibody (ATH3G10) on SDS-PAGE under reducing (R) condition. The gel was stained with Coomassie Blue. The purity of the protein is greater than 95%



The purity of Anti-Phosphorylcholine Reference Antibody (ATH3G10) is more than 96.73 %, determined by SEC-HPLC.

Please note: All products are 'FOR RESEARCH USE ONLY. NOT FOR USE IN DIAGNOSTIC OR THERAPEUTIC PROCEDURES'.