

Anti-CXCR4 / CD184 Reference Antibody (ulocuplumab)

Recombinant Antibody

Catalog # APR10638

Product Information

Application	FC, Kinetics, Animal Model
Primary Accession	P61073
Reactivity	Human, Mouse
Clonality	Monoclonal
Isotype	IgG4
Calculated MW	39746

Additional Information

Target/Specificity	CXCR4 / CD184
Endotoxin	
Conjugation	Unconjugated
Expression system	CHO Cell
Format	Purified monoclonal antibody supplied in PBS, pH6.0, without preservative. This antibody is purified through a protein A column.

Protein Information

Name	CXCR4 {ECO:0000303 PubMed:9468539, ECO:0000312 HGNC:HGNC:2561}
Function	<p>Receptor for the C-X-C chemokine CXCL12/SDF-1 that transduces a signal by increasing intracellular calcium ion levels and enhancing MAPK1/MAPK3 activation (PubMed:10074102, PubMed:10452968, PubMed:10644702, PubMed:10825158, PubMed:18799424, PubMed:20048153, PubMed:20505072, PubMed:24912431, PubMed:28978524, PubMed:8752280, PubMed:8752281). Ligand binding causes a conformation change that triggers signaling via guanine nucleotide-binding proteins (G proteins) and modulates the activity of downstream effectors, such as adenylate cyclase (PubMed:16725153, PubMed:17197449, PubMed:18799424, PubMed:39093700). CXCR4 is coupled to G(i) G alpha proteins and mediates inhibition of adenylate cyclase (PubMed:17197449, PubMed:39093700). Involved in the AKT signaling cascade (PubMed:24912431). Plays a role in regulation of cell migration, e.g. during wound healing (PubMed:28978524). Also acts as a receptor for extracellular ubiquitin; leading to enhanced intracellular calcium ions and reduced cellular cAMP levels (PubMed:20228059). Binds bacterial lipopolysaccharide (LPS) et mediates LPS-induced inflammatory response, including TNF secretion by monocytes (PubMed:11276205). Involved in hematopoiesis and in cardiac ventricular septum formation (By similarity). Also plays an essential role in</p>

vascularization of the gastrointestinal tract, probably by regulating vascular branching and/or remodeling processes in endothelial cells (By similarity). Involved in cerebellar development; in the CNS, could mediate hippocampal-neuron survival (By similarity).

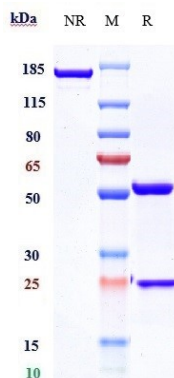
Cellular Location

Cell membrane; Multi-pass membrane protein. Cell junction. Early endosome. Late endosome. Lysosome Note=In unstimulated cells, diffuse pattern on plasma membrane (PubMed:10452968, PubMed:14602072, PubMed:21540189). On agonist stimulation, colocalizes with ITCH at the plasma membrane where it becomes ubiquitinated (PubMed:14602072). In the presence of antigen, distributes to the immunological synapse forming at the T-cell-APC contact area, where it localizes at the peripheral and distal supramolecular activation cluster (SMAC) (PubMed:20215400)

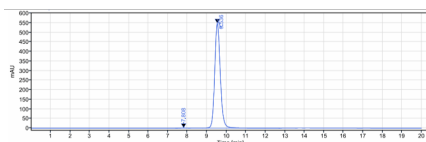
Tissue Location

Expressed in numerous tissues, such as peripheral blood leukocytes, spleen, thymus, spinal cord, heart, placenta, lung, liver, skeletal muscle, kidney, pancreas, cerebellum, cerebral cortex and medulla (in microglia as well as in astrocytes), brain microvascular, coronary artery and umbilical cord endothelial cells Isoform 1 is predominant in all tissues tested

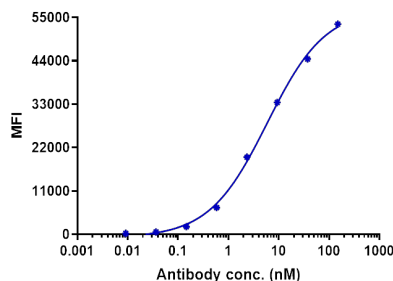
Images



Anti-CXCR4 / CD184 Reference Antibody (ulocuplumab) on SDS-PAGE under reducing (R) condition. The gel was stained with Coomassie Blue. The purity of the protein is greater than 95%



The purity of Anti-CXCR4 / CD184 Reference Antibody (ulocuplumab) is more than 99.48%, determined by SEC-HPLC.



Human CXCR4 Romas cells were stained with Anti-CXCR4 / CD184 Reference Antibody (ulocuplumab) and negative control protein respectively, washed and then followed by PE and analyzed with FACS, EC704=5.915 nM

Please note: All products are 'FOR RESEARCH USE ONLY. NOT FOR USE IN DIAGNOSTIC OR THERAPEUTIC PROCEDURES'.