

Anti-RGMA Reference Antibody (elezanumab)

Recombinant Antibody
Catalog # APR10582

Product Information

Application	FC, Kinetics, Animal Model
Primary Accession	Q96B86
Reactivity	Human, Mouse, Rat
Clonality	Monoclonal
Isotype	IgG1
Calculated MW	49361

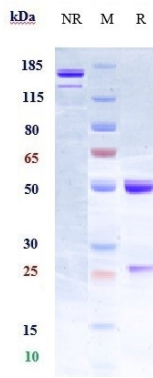
Additional Information

Target/Specificity	RGMA
Endotoxin Conjugation	Unconjugated
Expression system	CHO Cell
Format	Purified monoclonal antibody supplied in PBS, pH6.0, without preservative. This antibody is purified through a protein A column.

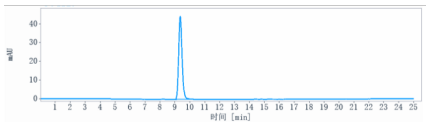
Protein Information

Name	RGMA (HGNC:30308)
Synonyms	RGM
Function	Member of the repulsive guidance molecule (RGM) family that performs several functions in the developing and adult nervous system. Regulates cephalic neural tube closure, inhibits neurite outgrowth and cortical neuron branching, and the formation of mature synapses. Binding to its receptor NEO1/neogenin induces activation of RHOA- ROCK1/Rho-kinase signaling pathway through UNC5B-ARHGEF12/LARG- PTK2/FAK1 cascade, leading to collapse of the neuronal growth cone and neurite outgrowth inhibition. Furthermore, RGMA binding to NEO1/neogenin leads to HRAS inactivation by influencing HRAS-PTK2/FAK1- AKT1 pathway. It also functions as a bone morphogenetic protein (BMP) coreceptor that may signal through SMAD1, SMAD5, and SMAD8.
Cellular Location	Cell membrane; Lipid-anchor, GPI- anchor

Images



Anti-RGMA Reference Antibody (elezanumab) on SDS-PAGE under reducing (R) condition. The gel was stained with Coomassie Blue. The purity of the protein is greater than 95%



The purity of Anti-RGMA Reference Antibody (elezanumab) is more than 100% ,determined by SEC-HPLC.

Please note: All products are 'FOR RESEARCH USE ONLY. NOT FOR USE IN DIAGNOSTIC OR THERAPEUTIC PROCEDURES'.