

Anti-IFN γ Reference Antibody (emapalumab)

Recombinant Antibody
Catalog # APR10560

Product Information

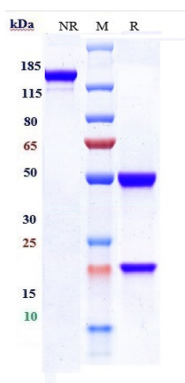
Application	FC, Kinetics, Animal Model
Primary Accession	P01579
Reactivity	Human
Clonality	Monoclonal
Isotype	IgG1
Calculated MW	145 KDa

Additional Information

Target/Specificity	IFN γ
Endotoxin Conjugation	Unconjugated
Expression system	CHO Cell
Format	Purified monoclonal antibody supplied in PBS, pH6.0, without preservative. This antibody is purified through a protein A column.

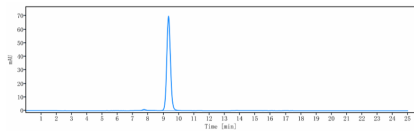
Protein Information

Images



Anti-IFN γ Reference Antibody (emapalumab) on SDS-PAGE under reducing (R) condition. The gel was stained with Coomassie Blue. The purity of the protein is greater than 95%

The purity of Anti-IFN γ Reference Antibody (emapalumab) is more than 99%, determined by SEC-HPLC.



Please note: All products are 'FOR RESEARCH USE ONLY. NOT FOR USE IN DIAGNOSTIC OR THERAPEUTIC PROCEDURES'.